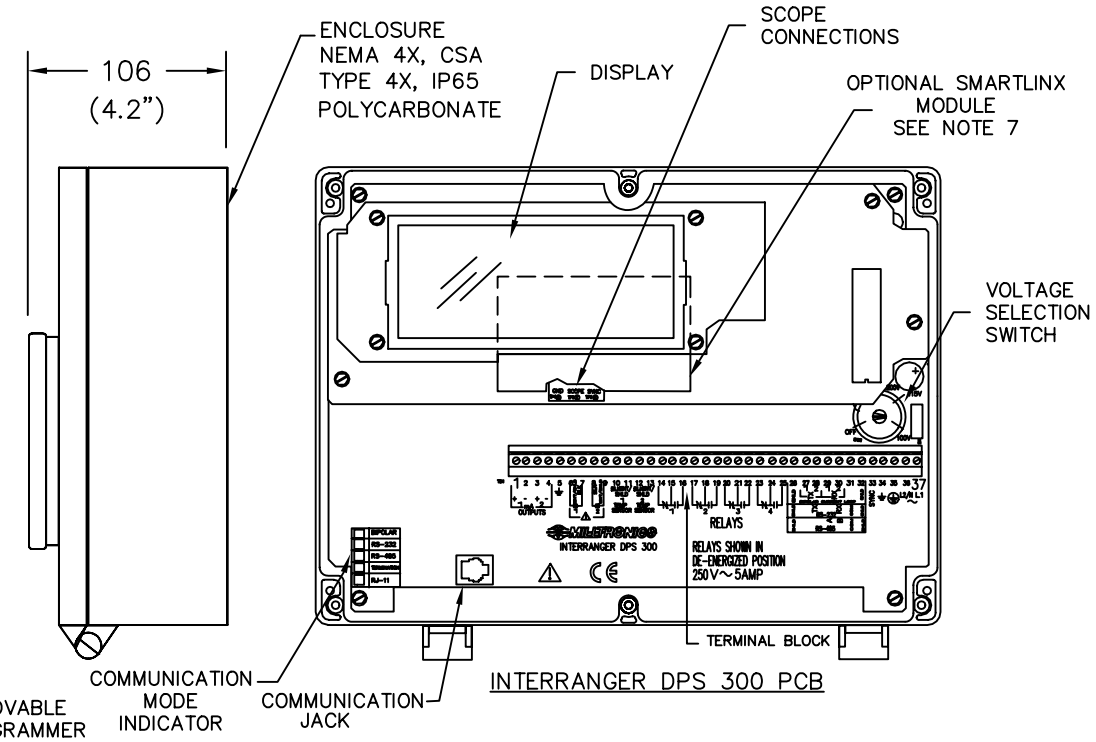
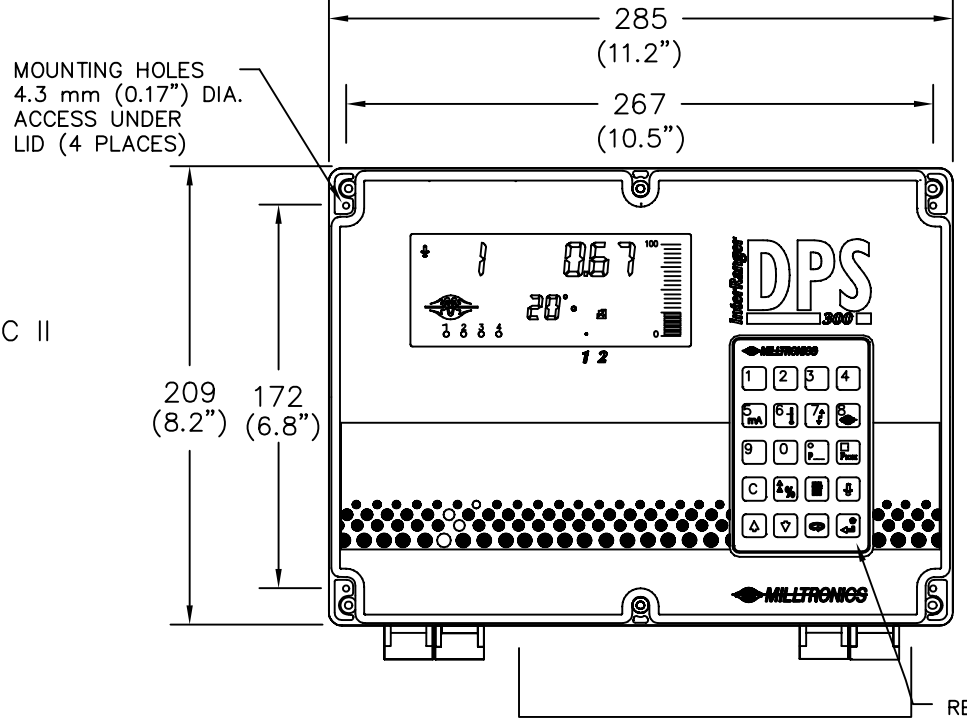


NOTES:

- 1) ALL DIMENSIONS ARE mm. () DENOTES INCHES.
- 2) — — DENOTES WIRING BY CUSTOMER. ALL WIRING MUST BE DONE IN CONJUNCTION WITH APPROVED CONDUIT, FITTINGS, AND BOXES ALSO IN ACCORDANCE WITH ALL GOVERNING REGULATIONS.
- 3) ONLY TS-3 TEMP. SENSORS ARE TO BE USED. DO NOT JUMPER TERMINALS [10,11] OR [12,13] IF TS-3 IS NOT USED.
- 4) POSITION SW1 FOR 100/115/200/230/OFF VAC OPERATION, 50-60 HZ, 31 VA.
- 5) WHEN MOUNTING 2 OR MORE UNITS IN THE SAME AREA, DAISY CHAIN CONNECT TB1-33 BETWEEN UNITS.
- 6) FOR OPTIMUM NOISE IMMUNITY, RUN TRANSDUCER CABLES IN GROUNDED METAL CONDUIT, SEPARATE FROM OTHER WIRING (EXCEPT TEMP. SENSOR IF USED).
- 7) REFER TO SPECIFIC SMARTLINX INSTRUCTION MANUAL IF MODULE IS USED.
- 8) FOR FURTHER INFORMATION REFER TO DPS 300 INSTRUCTION MANUALS.
- 9) mA OUTPUTS SHARE -VE.
- 10) REFER TO DPS 300 INSTRUCTION MANUAL FOR SPECIFIC CONNECTION OF EACH TYPE OF COMMUNICATIONS AND AUTOMATIC COMMUNICATIONS RECOGNITION. MAXIMUM DISTANCE BETWEEN DPS 300 AND CUSTOMER DEVICE IS 15 m (50FT) FOR RS-232, 1200 m (4000 FT) FOR RS-485, AND 1500 m (5000 FT) FOR BIC-II.



SUITABLE LOCATION FOR CONDUIT ENTRANCES USE WATER TIGHT CONDUIT HUBS TO MAINTAIN THE ENCLOSURE RATING

! SEE INSTRUCTION MANUAL FOR PROPER OPERATION.

0	FOR ISSUE	RPC	CAC	DEC 09/98
No.	REVISION DESCRIPTION	DWG BY	APPRO.	DATE

CONFIDENTIAL
IMPORTANT NOTICE
 THIS DOCUMENT REMAINS THE PROPERTY OF MILLTRONICS AND IS SUBJECT TO RECALL. IT MAY NOT BE COPIED, AND IS ISSUED AND CAN BE UTILIZED ONLY FOR SUCH LIMITED PURPOSES AS MAY SPECIFICALLY HAVE BEEN AUTHORIZED BY MILLTRONICS. IT IS TO BE MAINTAINED CONFIDENTIAL, SINCE IT MAY CONTAIN PROPRIETARY INFORMATION AND TRADE SECRETS OF MILLTRONICS OR OTHERS. THE ITEMS DEPICTED MAY THEMSELVES BE THE SUBJECT OF PATENTS, INDUSTRIAL DESIGN REGISTRATIONS OR COPYRIGHTS OF MILLTRONICS OR OTHERS, AND THE ISSUE OF THIS DRAWING DOES NOT IMPLY ANY LICENSE UNDER ANY SUCH RIGHTS.
 COPYRIGHT MILLTRONICS
 ALL RIGHTS RESERVED

DRAWING SCALE
 NONE
 DRAWN BY
 R. CLYSDALE
 CHECKED BY
 Q. LYON
 APPROVED BY
 A. CARLSON

TOLERANCES UNLESS OTHERWISE NOTED
 1 PLACE DECIMAL ±0.030" FRACTIONS ±0.030"
 2 PLACE DECIMAL ±0.010"
 3 PLACE DECIMAL ±0.002" ANGLES ±0.5°
 THIRD ANGLE PROJECTION
INTERRANGER DPS 300
OUTLINE & CONNECTION
DIAGRAM

MILLTRONICS
 PETERBOROUGH, ONTARIO, CANADA.

FILE No. 00130100	DRAWING No. 0-8420013Z-DU-B	REV. 0
PLOT AT 1=1	SHEET 1 OF 1	
JOB No.		