

## Installation and operating instructions for OVENPAK® LE burners

### Application requirements

#### View port

---

A view port to observe burner flame is helpful to inspect flame aspect. Locate the view port downstream of the flame, looking back to the burner block. Make sure the complete flame can be evaluated.

#### Required ancillary equipment

---

Ensure that all ancillary equipment for safe operation and correct performance of the OVENPAK® LE burner is installed, as described in the applicable local codes and/or process-related instructions. An accurate control of the air/gas ratio is essential for optimal performance of the burner.

#### Support burner air and gas piping

---

The OVENPAK® LE burner shall not be used as support for the piping to the burner. Gas and air piping shall be supported in such way that no additional loads will be created on the burner.

#### Burner mounting flange loads

---

Check burner weight and reinforce burner mounting flange or combustion chamber/furnace back wall if necessary to take complete burner weight.

## Installation instructions

#### Storage of OVENPAK® LE burners

---

OVENPAK® LE burners shall be stored dry (inside).

#### Handling of OVENPAK® LE burners

---

OVENPAK® LE burners are shipped as complete units. Packaged burners may be shipped with blowers removed. Handle burners with care during unpacking, transport, lifting and installation. Use proper equipment. Any impact on the burner could result in damage.

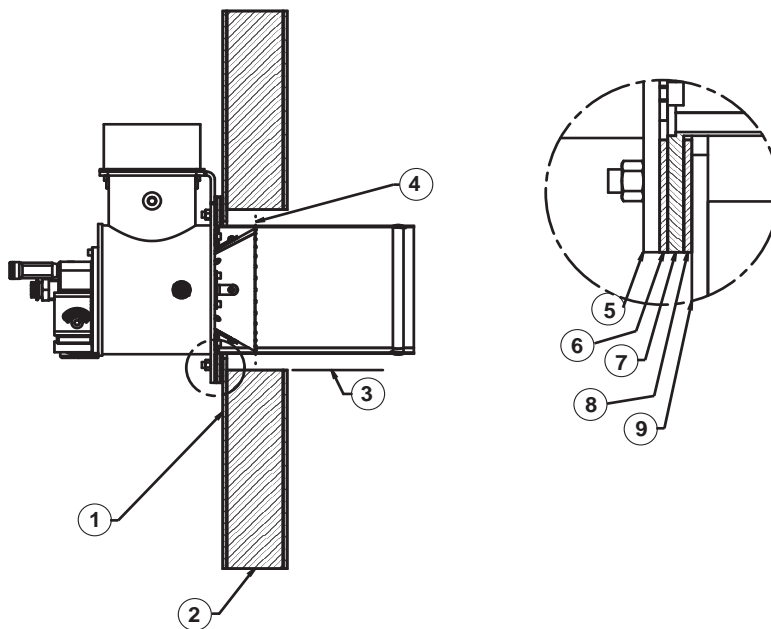
#### Flange the burner to the installation

---

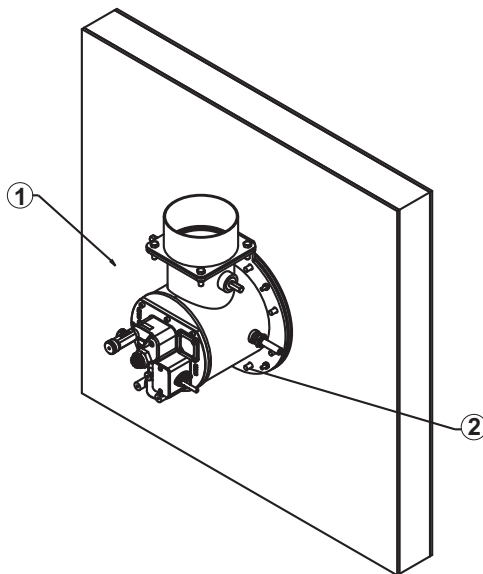
Bolt the burner to the installation's burner mounting flange. Use proper gasketing. Tighten the flange bolting with correct torque. Retighten all bolts after first firing and regularly after commissioning.

Burner mounting

- 1) Heater shell
- 2) Insulated wall (6" maximum depth)
- 3) Cut opening 1" larger than sleeve diameter
- 4) This area may be packed with insulation up to 2" in depth
- 5) Burner flange
- 6) Gasket supplied with burner
- 7) Discharge sleeve-flange
- 8) Optional gasket
- 9) Heater wall



- 1) Ensure heater shell can support burner weight. If not, add a stiffening plate or support burner weight by other means.
- 2) Mounting studs (by others)



## Start-up instructions for OVENPAK® LE burners

Instructions provided by the company or individual responsible for the manufacture and/or overall installation of a complete system incorporating MAXON burners take precedence over the installation and operating instructions provided by MAXON. If any of the instructions provided by MAXON are in conflict with local codes or regulations, please contact MAXON before initial start-up of equipment.



Read the combustion system manual carefully before initiating the start-up and adjustment procedure. Verify that all of the equipment associated with and necessary to the safe operation of the burner system has been installed correctly, that all pre-commissioning checks have been carried out successfully and that all safety related aspects of the installation are properly addressed.

Initial adjustment and light-off should be undertaken only by a trained commissioning engineer.

### Checks during and after start-up

---

During and after start-up, check the integrity of the system. Check all bolted connections after first firing (first time on temperature) and retighten if necessary.

### Pilot ignition

---

Before ignition of the pilot, adjust the combustion air to the minimum burner air flow. Pilot will not ignite if too high an air flow exists. Set pilot gas flow to the correct value before pilot ignition attempt.

### Main burner ignition

---

Set correct gas flow for burner minimum capacity before attempt of main burner ignition. After ignition of main burner, allow some time on minimum capacity to allow the burner parts to heat up slowly.

### Adjust air/gas ratio, set maximum capacity

---

Once the main flame is ignited, adjust air/gas ratio of the burner to have the required combustion quality and slowly increase capacity. Do not increase capacity too fast to avoid damage to burner parts or furnace due to excessive temperature gradient. For OVENPAK® LE, adjust fuel pressures to be always equal to combustion air pressures.

## Maintenance & inspection instructions

### Safety requirements

---

Regular inspection, testing and recalibration of combustion equipment according to the installation manual is an integral part of its safety. Inspection activities and frequencies shall be carried out as specified in the installation manual.

### Visual inspections

---

Regular visual inspection of all connections (air and gas piping to the burner, bolting of the burner to the furnace) and burner flame size and aspect are essential.

### Spare parts

---

Keep local stock of spark ignitor. It is not recommended to keep local stock of other burner parts. Consult installation manual for burner spare parts and system accessories.