

The Millflo solids flowmeter provides continuous in-line weighing of free flowing granular dry bulk solids such as sand, grain, plastic pellets, seeds or nuts. A wide range of product sizes, densities and fluidities may be applied. This low-cost unit helps to provide improved processing, increased operating efficiency and significant cost savings. The Millflo's compact design enables it to be installed in restricted spaces.

Operating with a microprocessor-based integrator package, the Millflo provides a display of flow rate, totalized flow and alarms. Outputs are 0/4-20mA proportional to rate, and contact closure for remote totalization.

Dry bulk solids enter the flow guide producing a mechanical deflection as they strike the flowmeter sensing plate before continuing through the process unhindered. A strain gauge load cell converts the horizontal force of the deflection into an electrical signal. The integrator processes this into a display of flow rate and integrated total weight. The process is immune to the effect of product build-up as only the horizontal force is measured.



Product Features

- Compact rugged design for restricted space installation
- Versatile application
- Low cost, high reliability
- Flowrates from 1 to 230 t/h (1 to 250 STPH)
- Process temperatures to 65°C (150°F)

Technical Specifications

Inlet Size	Capacity Range	Particle Size
100 mm (4")	1 to 14 t/h (1 to 15 STPH)	6 mm (0.25")
150 mm (6")	4 to 35 t/h (4.3 to 38 STPH)	10 mm (0.38")
200 mm (8")	18 to 80 t/h (20 to 87 STPH)	10 mm (0.38")
250 mm (10")	45 to 135 t/h (49 to 147 STPH)	13 mm (0.5")
300 mm (12")	90 to 230 t/h (98 to 250 STPH)	13 mm (0.5")

Note: These figures are provided for information purposes only and cannot be used for official definitions.
Capacity range may be limited by the bulk density of the product.

Construction

- painted mild steel, stainless steel sensing plate (other materials available upon request)
- nickel plated or stainless steel load cell

Max. Material Temperature

- 65°C (150°F)

Type of Materials Measured

- fine powder to granules up to 13 mm (0.5")

Accuracy

- ±1%, 33 to 100% of maximum admissible flow rate

Non-repeatability

- 0.2%

Electronic Units

- Compu-M / CompuFlo III

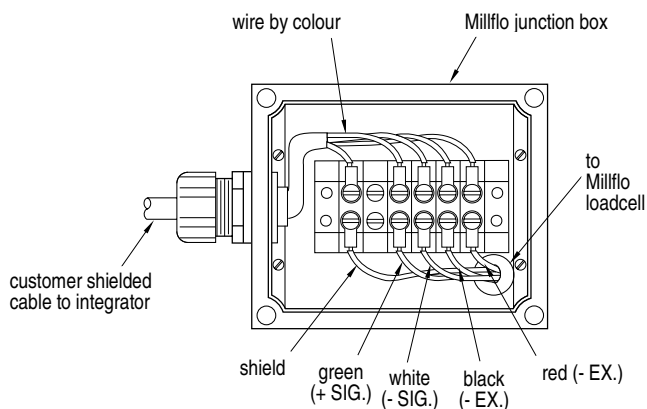
Hazardous Locations

- with the use of intrinsically safe barrier strips

Approvals

- CE compliant

Wiring



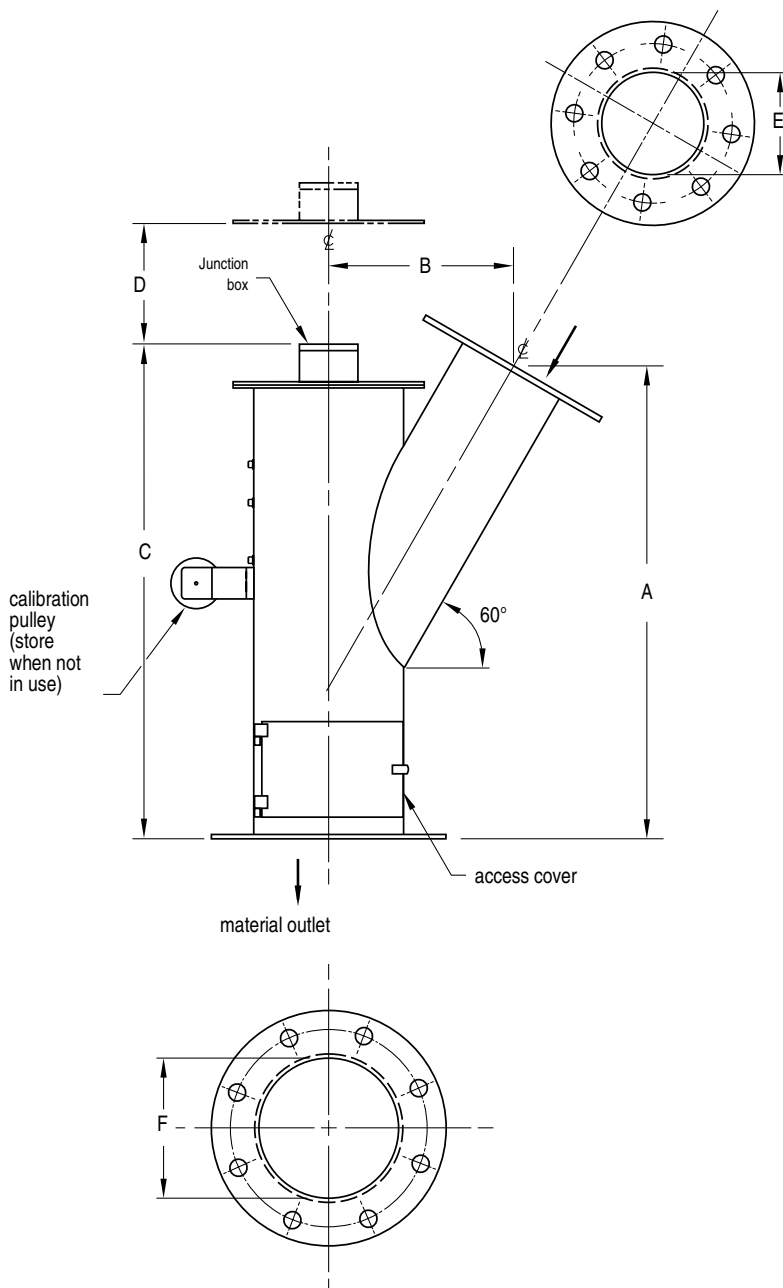
Options

- All flowmeters (all sizes) are available in painted mild steel coated or stainless steel 304 or 316.
- ANSI flanges are available upon request.
- Internal sensing plate is available with abrasion resistant and non-stick coatings.

Millflo Flowmeter

Dimensions

Size	Millflo Dimensions			ANSI			DIN	
	A	B	C	D	E	F	E	F
100mm (4")	597mm (23.5")	203mm (8")	660mm (26")	413mm (16")	108 mm (4.26")	162mm (6.36")	105mm (4")	155mm (6")
150mm (6")	838mm (33")	254mm (10")	914mm (36")	660mm (26")	162mm (6.38")	212mm (8.33")	155mm (6")	206mm (8")
200mm (8")	1168mm (46")	356mm (14")	1244mm (49")	711mm (28")	212mm (8.33")	315mm (12.39")	206mm (8")	305mm (12")
250mm (10")	1321mm (52")	406mm (16")	1397mm (55")	813mm (32")	265mm (10.42")	343mm (13.5")	260mm (10")	336mm (13.2")
300mm (12")	1575mm (62")	483mm (19")	1651mm (65")	914mm (36")	315mm (12.39")	394mm (15.5")	305mm (12")	387mm (15.2")



Installation

Dimension D denotes the amount of room necessary to remove the sensing plate for cleaning. Flanges are compatible with DIN 2566, 2581, 2632 or ANSI. The Millflo must be installed upright and level to within 1°.

For further dimensions, request drawings from Milltronics representative.



Australia	Tel.: +61 3-9695-2400	Fax: +61 3-9695-2450
Belgium	Tel.: +32(0)3326 45 54	Fax: +32(0)3326 05 25
Canada	Tel.: +1 705-745-2431	Fax: +1 705-741-0466
France	Tel.: +33 4 42 65 69 00	Fax: +33 4 42 58 63 95
Germany	Tel.: +49 721 595 4607	Fax: +49 721 595 4937
Hong Kong	Tel.: +85 2-2856-3166	Fax: +85 2-2856-2962
Mexico	Tel.: +52 5 575-27-28	Fax: +52 5 575-26-86
The Netherlands	Tel.: +31(0)76 542 7 542	Fax: +31(0)76 542 8 542
Switzerland	Tel.: +41 21 791 58 28	Fax: +41 21 791 58 40
United Kingdom	Tel.: +44 1905-450500	Fax: +44 1905-450501
United States	Tel.: +1 817-277-3543	Fax: +1 817-277-3894

www.milltronics.com

