

The Autoweigh Feeder 600 Series is designed for low-to medium-capacity loads. It has been field tested and proven in hundreds of applications.

The unit can be customized to meet exact application needs, and custom units can usually be delivered within 4-6 weeks. Stainless or mild steel units are available in open or enclosed styles. Custom lengths, belt types, inlet configurations, drives, and other options are available to meet your requirements.

The MS (mild steel) model is ideal for use with chemicals, powders, or any granular product in applications not requiring washdown. The SD (sanitary duty) model is designed for the food industry where high pressure washdown is required. It meets all USDA and FDA requirements.

Its cantilevered mechanical design provides for quick belt removal and easy maintenance. It's designed to eliminate material build-up, ensuring high accuracy and reliability. The unique weigh system reduces dead load and applies live load directly to 2 platform load cells. Load cells are externally mounted for easy access and maintenance.

Standard components include the belt weigh bridge, speed sensor and test weights, supported by Milltronics' state-of-the-art microprocessor-based integrators for easy blending, batching and feed rate control.



Features

- High accuracy
- Ideal for low to medium capacity loads
- Fast installation, easy to clean and maintain
- Flexible, rugged design allows configurations to suit many applications
- Custom units can be delivered in 4-6 weeks

Technical Specifications

Accuracy

- +/- 0.5%

Operating Temperature

- -10 to 40°C (14 to 104°F)

Materials

- mild steel or stainless steel

Load Cells

- two corrosion resistant platform type with mechanical overload protection (aluminium or stainless steel)

Output

- non-linearity +/- 0.03%
- non-repeatability 0.02%

Speed Sensor

- C-flange mounted magnetic pulse generator, adapted between motor flange and reducer input flange
- optical encoder (optional)

Framework

- precision machined, stainless or mild steel
- cantilevered design for easy belt removal

Pulleys

- 152 mm (6") diameter with 6 mm (1/4") Urethane lagging

Belt Tension

- screw type, telescoper module with 152 mm (6") travel (mild or stainless steel)

Belting

- polyester carcass with polyurethane top cover and static control with vulcanised endless finger splice for maximum weighing consistency (standard)
- variety of different belts for specific applications (optional)

Drive

- 0.25 kW (1/3 HP) TEFC ac or dc motor with shaft mounted helical/worm gear reducer
- larger motors and motorized pulleys available

Belt Cleaning

- UHMW blade type with spring tensioning at head pulley
- return plow (optional)

Shipping Weight

- 140 kg (300 lbs.) to 230 kg (500 lbs.) maximum

Approvals

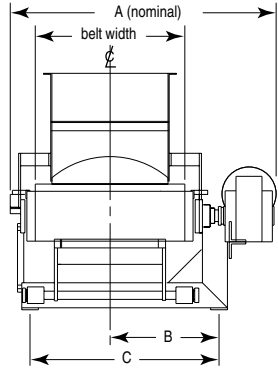
- for use in hazardous rated areas, consult with factory

Autoweigh Feeder 600 Series

Dimensions

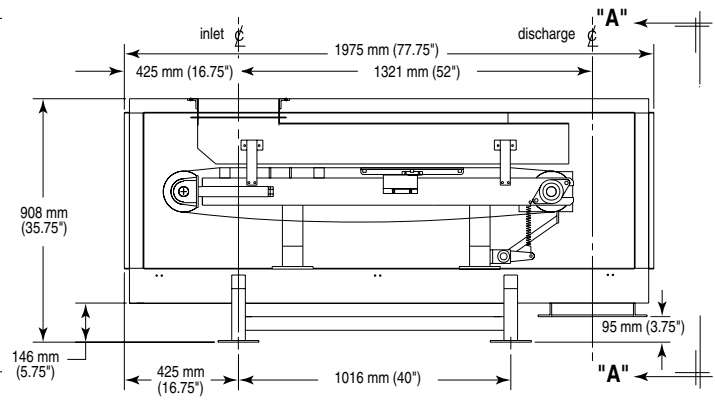
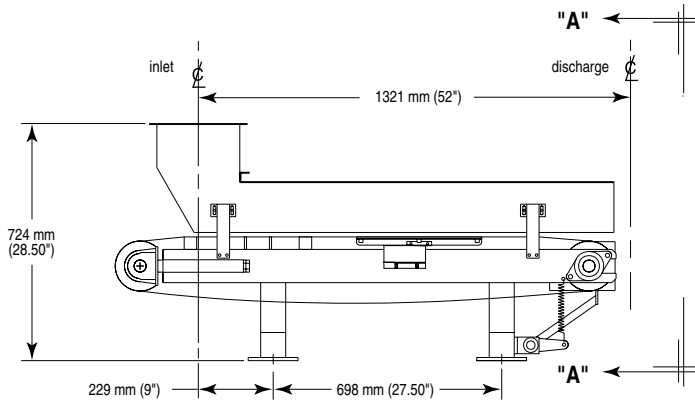
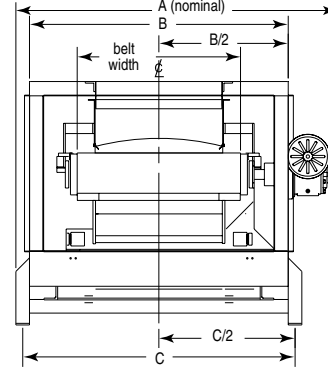
Open Construction

view A-A



Enclosed Construction

view A-A



Open Unit			
Belt Width	A	B	C
305mm (12")	660mm (26")	257mm (10.13")	425mm (16.75")
457mm (18")	813mm (32")	333mm (13.13")	578mm (22.75")
610mm (24")	965mm (38")	410mm (16.13")	730mm (28.75")
762mm (30")	1118mm (44")	486mm (19.13")	883mm (34.75")
914mm (36")	1270mm (50")	562mm (22.13")	1035mm (40.75")

Enclosed Unit			
Belt Width	A	B	C
305mm (12")	889mm (35.38")	660mm (26")	711mm (28")
457mm (18")	1051mm (41.38")	813mm (32")	864mm (34")
610mm (24")	1203mm (47.38")	965mm (38")	1016mm (40")
762mm (30")	1356mm (53.38")	1118mm (44")	1168mm (46")
914mm (36")	1508mm (59.38")	1270mm (50")	1321mm (52")



Australia	Tel.: +61 3-9695-2400	Fax: +61 3-9695-2450
Belgium	Tel.: +32(0)3326 45 54	Fax: +32(0)3326 05 25
Canada	Tel.: +1 705-745-2431	Fax: +1 705-741-0466
France	Tel.: +33 4 42 65 69 00	Fax: +33 4 42 58 63 95
Germany	Tel.: +49 721 595 4607	Fax: +49 721 595 4937
Hong Kong	Tel.: +85 2-2856-3166	Fax: +85 2-2856-2962
Mexico	Tel.: +52 5 575-27-28	Fax: +52 5 575-26-86
The Netherlands	Tel.: +31(0)76 542 7 542	Fax: +31(0)76 542 8 542
Switzerland	Tel.: +41 21 791 58 28	Fax: +41 21 791 58 40
United Kingdom	Tel.: +44 1905-450500	Fax: +44 1905-450501
United States	Tel.: +1 817-277-3543	Fax: +1 817-277-3894

www.milltronics.com