

This is one of the most accurate in-motion weighing systems on the market. It is specially designed for high accuracy on low-capacity processes. The design eliminates material build-up to ensure accurate, reliable measurement.

The unique long length platform weigh bridge mounts directly to a corrosion-resistant platform load cell. An adjustable mechanical shear gate profiles the material and fixes the correct material bed depth for a given material particle size. The belt speed can be automatically adjusted to attain the correct feed rate.

Standard components include the belt weigh bridge, speed sensor and test chains supported by Milltronics' state-of-the-art microprocessor-based integrators for easy blending, batching and feed rate control.



## Product Features

- High accuracy for low capacity loads
- Standard and sanitary models available
- Unique belt tension device
- Easy belt removal for replacement or cleaning
- Fast installation, easy to clean and maintain

## Technical Specifications

### Accuracy

- +/- 0.5% to 0.25%

### Operating Temperature

- -10°C to 40°C (14°F to 104°F)

### Materials

- mild steel or stainless steel contact surfaces

### Load Cells

- one (1) single point, aluminium platform (standard)
- stainless steel for corrosive and wash down environments (optional)

### Speed Sensor

- optical encoder, driven pulley mounted

### Framework

- precision machined, stainless or mild steel
- cantilevered design for easy belt removal

### Pulleys

- 115 mm (4.5") diameter, crowned and lagged

### Belt Tension

- counter weighted stainless steel tensioning idler for consistent tension, required for high accuracy weighing

### Belting

- polyester carcass with polyurethane top cover and endless finger splice for maximum weighing consistency (standard)
- variety of different belts for specific applications (optional)

### Drive

- standard - 0.19 kW (0.25 hp) ac or dc gear motor with chain and sprocket

### Washdown

- 0.19 kW (0.25 hp) ac or dc washdown duty motor with direct coupled shaft or flange mounted gear reducer
- custom configurations available

### Belt Cleaning

- Delrin blade type with counterweight at the head pulley for cleaning product side of belt
- return plow (optional)

### Shipping Weight

- 140 kg (300 lbs.) to 230 kg (500 lbs.) maximum

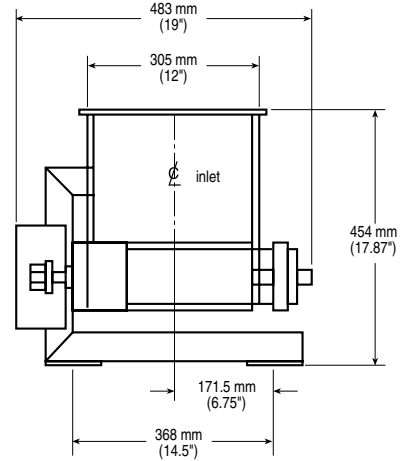
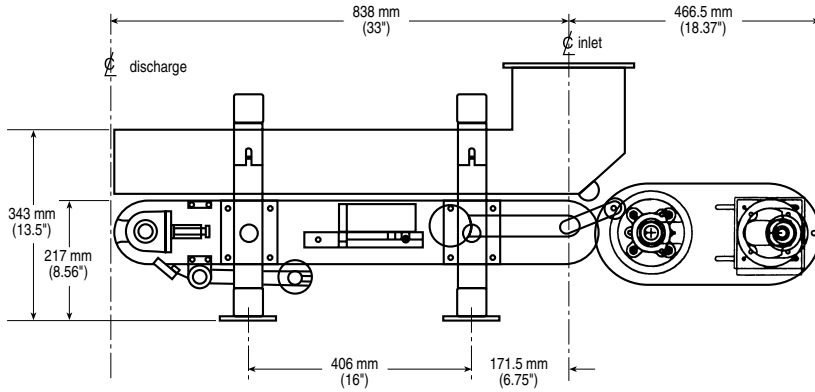
### Approvals

- for use in hazardous rated areas, consult with factory

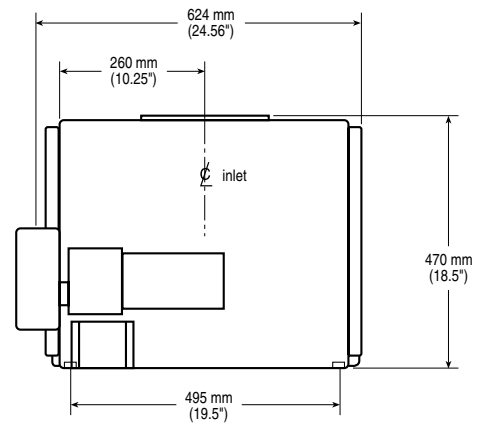
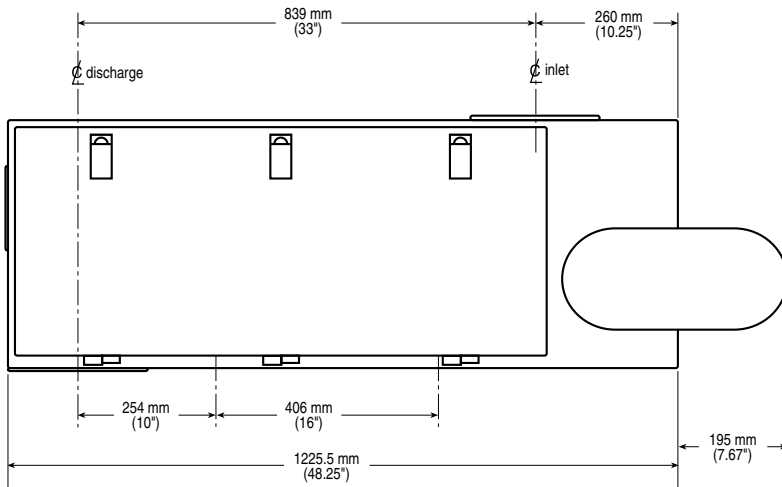
# Autoweigh Feeder 400 Series

## Dimensions

### Open Construction



### Enclosed Construction



Australia	Tel.: +61 3-9695-2400	Fax: +61 3-9695-2450
Belgium	Tel.: +32(0)3326 45 54	Fax: +32(0)3326 05 25
Canada	Tel.: +1 705-745-2431	Fax: +1 705-741-0466
France	Tel.: +33 4 42 65 69 00	Fax: +33 4 42 58 63 95
Germany	Tel.: +49 721 595 4607	Fax: +49 721 595 4937
Hong Kong	Tel.: +85 2-2856-3166	Fax: +85 2-2856-2962
Mexico	Tel.: +52 5 575-27-28	Fax: +52 5 575-26-86
The Netherlands	Tel.: +31(0)76 542 7 542	Fax: +31(0)76 542 8 542
Switzerland	Tel.: +41 21 791 58 28	Fax: +41 21 791 58 40
United Kingdom	Tel.: +44 1905-450500	Fax: +44 1905-450501
United States	Tel.: +1 817-277-3543	Fax: +1 817-277-3894

[www.milltronics.com](http://www.milltronics.com)