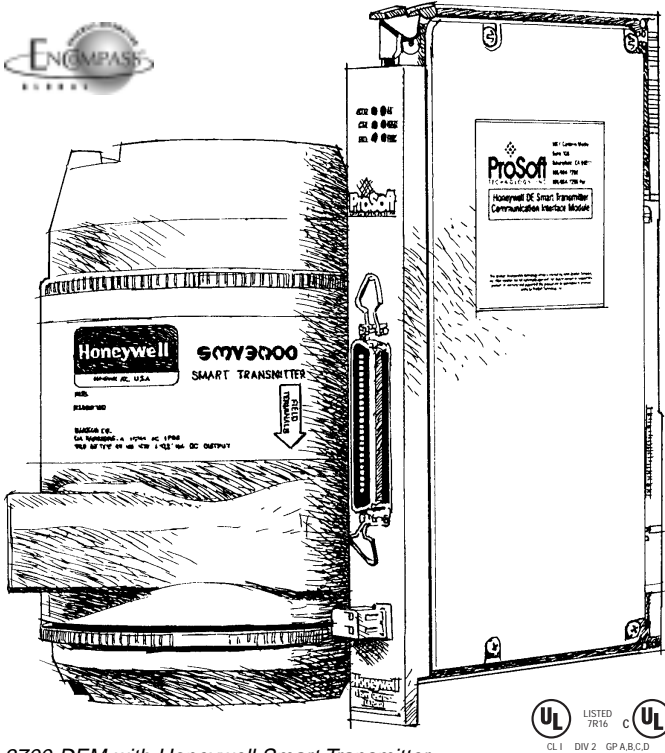


ProSoft Honeywell Smart Transmitter Interfaces

PLC/SLC Platform Support • 3700/3750-DEM



3700-DEM with Honeywell Smart Transmitter

Product Description

The 3700-DEM for the PLC platform and the 3750-DEM for the SLC platform are single slot modules that support digital communications with Honeywell Smart Transmitters. The modules support 16 DE channels(3700) or 8 DE channels(3750), allowing both Single and/or Multivariable Honeywell Transmitters operating in the DE mode to be directly integrated with the A-B 1771 and 1746 backplanes. Supported Honeywell instruments include:

- ST 3000 Smart Pressure Transmitter
- STT 3000 Smart Temperature Transmitter
- SMV 3000 Smart Multivariable Transmitter
- MagneW 3000 Smart Magnetic Flowmeter
- SCM 3000 Smart Coriolis Mass Flowmeter
- SGC 3000 Smart Gas Chromatograph

Simple to Use

Data exchange between the DEM module and the processor data table is performed using standard ladder logic commands (Block Transfer in the PLC and M0/M1 in the SLC). The data structure is automatically preset for the DE channels, allowing the module to be inserted into any PLC/SLC application with minimum ladder logic required.

Configuration Tools

To ease configuration, an optional Windows™ program is available for each of the modules. These configuration tools will allow easy configuration of the individual DE Channels, while also providing real time access to the PV values.

Functional Specifications

- 1771 and 1746 Form Factor - Single Slot
- Backplane data transfer
 - PLC via BTR/BTW commands
 - SLC via M0/M1 files
- Interfaces with Honeywell Smart Transmitters operating in the DE mode
- Support multiple DE channels with single PV transmitters, multivariable transmitters or a mixture equaling 8/16 inputs
 - PLC - up to 16 Channels
 - SLC - up to 8 Channels
- Full read/write access to instrument database
- Instrument database mismatch verification
- Interfaces directly to Honeywell Field Terminal Assembly (FTA), provided with module
- Supports redundant and non-redundant FTA implementations (Redundant optional)
- Single cable connection from DEM module to FTA
- External 24 VDC source connection on front of DEM module for instrument loop power
- Independent Reset Push-button for module (PLC)
- LEDs for visual module status:
 - Module Active
 - Module Fault
 - DE Channels 1-8 Active/Error
 - DE Channels 9-16 Active/Error
- Operation via simple ladder logic (Example provided on disk with each module)

Hardware Specifications

- Form Factor - Single Slot
- Backplane Current Load
 - PLC - 0.5 amps @ 5 Volts
 - SLC - 0.25 amps @ 5 Volts
- Operating Temperature:
 - 0 to 60 °C
 - 32 to 140 °F
- Storage Temperature:
 - 40 to 85 °C
 - 40 to 185 °F
- Relative Humidity: 5-95% (w/o condensation)
- FTA Connector: 50 pin Honeywell FTA
- 24 VDC Connector : 2 wire, screw termination

ProSoft Honeywell Smart Transmitter Interfaces

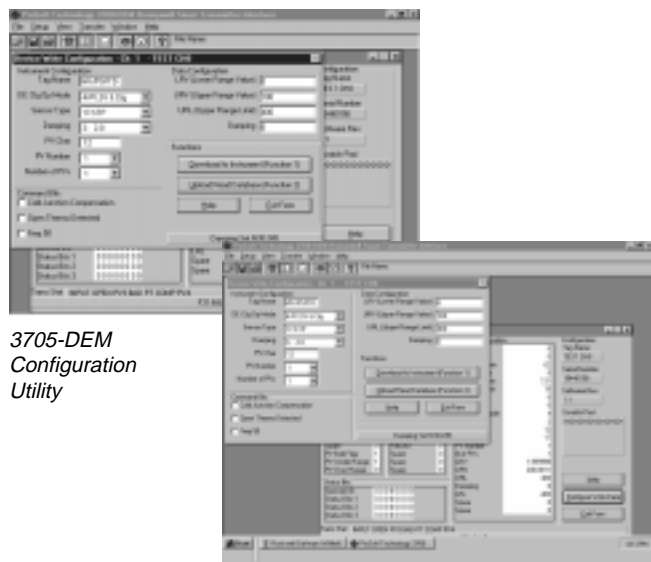
Product Features

The module is a DE protocol co-processor module, off-loading all aspects of protocol communications from the PLC. As such, the module performs many functions, including:

1. Support for up to 16 single PV transmitters, 4 multivariable transmitters with 4 PVs each, or any mix of single or multivariable equalling 16 inputs
2. Full Read/Write access to instrument database
3. Data analysis and integrity checking on the PV variable and the data base contents
4. Instrument database mismatch verification
5. Support for redundant and non-redundant implementations

All data communication between the module and the processor are performed using the Block Transfer commands over the backplane or via Remote I/O. This allows various card configurations, including local and remote rack, as well as multiple cards per rack. In today's intelligent transmitters, there is often substantially more data available than can be transferred via a single analog input. There are many benefits that can be derived from implementation of the DE protocol in a plant application, including:

- Remote diagnostics to the instrument level
- High resolution PV value (32 bit floating point number)
- Remote PV and database integrity checking
- Remote Read/Write access to instrument database
- Off-line instrument database configuration
- Simplified loop checkout and switchovers
- Redundant I/O module connection to each channel



3705-DEM
Configuration
Utility

Windows utility simplifies instrument setup

Ordering Information

To order this product, please order the following:

- 3700-DEM 1771 Platform (PLC5/2/3)
- 3705-S/W Configuration Software for the 3700-DEM
- 3750-DEM 1746 Platform (5/03 or better)
- 3755-S/W Configuration Software for the 3750-DEM

Example:

3700-DEM DE Module w/ FTA and Cable

Each module is shipped with a non-redundant FTA, a 10 foot cable, an Operations Manual, and example ladder logic on disk.

ProSoft Technology Contacts

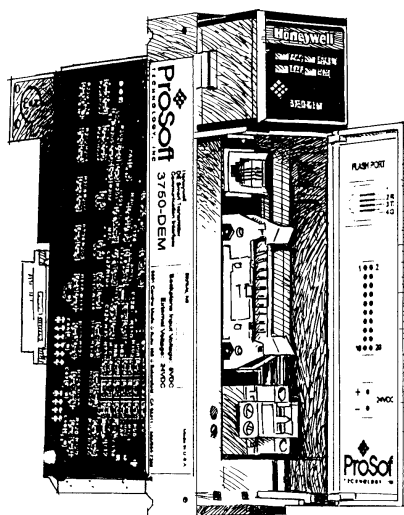
For pre-sales literature or to place an order:

Kim Tatman, prosoft@prosoft-technology.com

For technical information:

Mike Trask, trask@prosoft-technology.com

You may also contact ProSoft Technology to find the closest ProSoft Distributor.



3750-DEM


ProSoft
TECHNOLOGY, INC



9801 Camino Media • Suite 105 • Bakersfield, CA 93311

800/326-7066 • 661/664-7208 • Fax 661/664-7233

E-Mail: prosoft@prosoft-technology.com

Or visit our web site at: <http://www.prosoft-technology.com>

Regional Sales Offices: Asia, Europe and US, with Worldwide Distribution

Communication Solutions for Rockwell Automation