

We've been in the pressure gauge business for more than 35 years, so we've learned a trick or two! Special dials, ranges, case materials... No Problem! We work with a network of gauge manufacturers, each with their particular expertise to complement our own.

	Prices Start at	See Page
Differential Pressure Gauges		
Dwyer Magnehelic® Ultra Low Differential Pressure Gauges	\$63.50	438
Dwyer Photohelic® Indicating DP Gauges with High and Low Alarm	\$295.00	438
Mid-West Instrument Differential Pressure Gauges	\$225.00	436
Mid-West Instrument Differential Pressure Indicators for OEM Use	Call	436
Mid-West Instrument Model 120/122 Filter Minder Gauges	\$122.50	436
General Service Pressure Gauges		
U S Gauge P500 Low Cost Drawn Steel and Brass Gauges	\$6.61	422
U S Gauge P590 ABS Plastic and Brass Gauges	\$23.68	431
U S Gauge P844U/P845FF/P562U Panel Mount Gauges	\$26.47	423
Liquid-Filled Pressure Gauges		
U S Gauge 1550 Series 1.5" to 4" Stainless Steel Liquid Filled Gauges	\$26.85	425
U S Gauge 656 Series 2.5" or 4" Stainless Steel Liquid Filled Gauges	\$54.04	427
WIKA 213.53 2.5" Liquid Filled Industrial Gauges	\$19.64	424
WIKA 232.54 Liquid Filled Industrial Gauges	\$57.71	426
Process Gauges		
U S Gauge 1931 Series Solid Front Process Gauges	\$167.21	428
WIKA 232.34DD Direct Drive Process Gauges	\$211.56	429
WIKA 212.34 and 232.34 XSEL Solid Front Process Gauges	\$81.26	428
WIKA 3D Instruments Solid Front Direct Drive Pressure Gauges	\$178.20	429
Sanitary Gauges		
Chicago Stainless Equipment 3.5" and 5" Sanitary Gauges	\$304.00	432
Special Service Gauges		
Cecomp DPG1000 Series High Accuracy Digital Pressure Gauges	\$319.00	424
U S Gauge 1409 Series Portable 3" Test Gauges	\$214.15	431
U S Gauge 5105 HVAC Contractor's Gauge	\$27.77	430
U S Gauge P601/P612 Welding and Compressed Gas Regulator Gauges	\$27.58	430
U S Gauge P734 Low Pressure Diaphragm Gauges	\$74.55	430
U S Gauge P1535 Stainless Steel Pressure Gauges	\$161.14	431
U S Gauge PT1088 Pressure/Temperature Gauges for Boiler Service	\$43.37	430
WIKA 111.10SP Sprinkler System Gauges	\$15.06	430
WIKA 611.10 Low Pressure Diaphragm Gauges	\$43.15	431
Accessories		
Hex Valve Metal Seat Hand Valves	\$142.20	433
Capillary and Coil Syphons	\$8.84	433
Mid-West Instrument Pressure Snubbers and Limiting Valves	\$31.00	433
WIKA Liquid Filled Chemical Seals for Pressure Gauges	Call	434



Prices in this catalog are current at the publication date, and are subject to change without notice. Due to manufacturer agreements, not all products are available in all geographic areas and markets.

500 Series General Service Pressure Gauges



Combine ranges for maximum savings! Call for quantity discounts!

Specifications**Accuracy:** $\pm 3-2-3\%$ of span**Window:** Flat glass, except 1.5" (plastic); Plastic lenses available for all sizes**Case and Ring (friction fit):** Drawn steel, black corrosion-resistant paint**Socket and Movement:** Brass**Bourdon Tube:** Phosphor bronze, soft soldered**Connection:** 1/8" or 1/4" NPT

Pressure Range	Dial Size	Catalog Number	Price Each
1/4" NPT Bottom Connection			
30"HgVac	2.5"	171222A	\$10.80
30"-15 PSI	2.5"	047001A	16.00
30"-30 PSI	2.5"	047105A	16.00
30"-60 PSI	2.5"	046646A	16.00
30"-150 PSI	2.5"	047411A	10.80
0-15 PSI	2.5"	047102A	10.80
0-30 PSI	2.5"	163278	10.80
0-60 PSI	2.5"	163279	10.80
0-100 PSI	2.5"	163280	10.80
0-160 PSI	2.5"	163281	10.80
0-200 PSI	2.5"	163282	10.80
0-300 PSI	2.5"	163283	10.80
0-400 PSI	2.5"	049611A	10.80
0-600 PSI	2.5"	046648A	10.80
0-1000 PSI	2.5"	047496A	10.80
30"HgVac	3.5"	171223A	12.11
30"-15 PSI	3.5"	005493A	12.11
30"-30 PSI	3.5"	005495A	12.11
30"-150 PSI	3.5"	005499A	12.11
30"-300 PSI	3.5"	015936A	12.11
0-15 PSI	3.5"	005502A	12.11
0-30 PSI	3.5"	168536	12.11
0-60 PSI	3.5"	168537	12.11
0-100 PSI	3.5"	168538	12.11
0-160 PSI	3.5"	168539	12.11
0-200 PSI	3.5"	168540	12.11
0-300 PSI	3.5"	168541	12.11
0-400 PSI	3.5"	005515A	12.11
0-600 PSI	3.5"	005516A	12.11
0-1000 PSI	3.5"	005519A	12.11
30"HgVac	4.5"	005333A	19.70
30"-30 PSI	4.5"	005549A	19.70
30"-60 PSI	4.5"	012290A	19.70
30"-150 PSI	4.5"	012292A	19.70
0-30 PSI	4.5"	005804A	19.70
0-60 PSI	4.5"	005551A	19.70
0-100 PSI	4.5"	005554A	19.70
0-160 PSI	4.5"	005559A	19.70
0-200 PSI	4.5"	005561A	19.70
1/4" NPT Center Back Connection			
0-15 PSI	2"	046987A	6.61
0-30 PSI	2"	163949	6.61
0-60 PSI	2"	163272	6.61
0-100 PSI	2"	163273	6.61
0-160 PSI	2"	163274	6.61
0-200 PSI	2"	163275	6.61
0-300 PSI	2"	163276	6.61
0-60 PSI	2.5"	165214	10.80
0-100 PSI	2.5"	163284	10.80
0-160 PSI	2.5"	163285	10.80
0-200 PSI	2.5"	163286	10.80
0-600 PSI	2.5"	050851A	10.80
0-1000 PSI	2.5"	050870A	10.80

Pressure Range	Dial Size	Catalog Number	Price Each
1/8" NPT Bottom Connection			
30"HgVac	1.5"	146020A	\$8.37
0-15 PSI	1.5"	146000A	8.37
0-30 PSI	1.5"	166327	8.37
0-60 PSI	1.5"	146002A	8.37
0-100 PSI	1.5"	166318	8.37
0-160 PSI	1.5"	146004A	8.37
0-200 PSI	1.5"	166777	8.37
0-300 PSI	1.5"	146006A	8.37
30"HgVac	2"	047225A	6.61
30"HgVac-15 PSI	2"	066662A	6.61
30"HgVac-60 PSI	2"	047925A	6.61
30"HgVac-150 PSI	2"	049609A	6.61
0-15 PSI	2"	052420A	6.61
0-30 PSI	2"	163931	6.61
0-60 PSI	2"	164005	6.61
0-100 PSI	2"	163271	6.61
0-160 PSI	2"	048302A	6.61
0-200 PSI	2"	046645A	6.61
0-300 PSI	2"	048363A	6.61
0-160 PSI	2.5"	048536A	10.80
0-200 PSI	2.5"	050852A	10.80
0-300 PSI	2.5"	046647A	10.80
1/8" NPT Center Back Connection			
30"HgVac	1.5"	146021A	8.37
0-15 PSI	1.5"	146010A	8.37
0-30 PSI	1.5"	166320	8.37
0-60 PSI	1.5"	166321	8.37
0-100 PSI	1.5"	166322	8.37
0-160 PSI	1.5"	166323	8.37
0-200 PSI	1.5"	146015A	8.37
0-30 PSI	2"	163930	6.61
0-60 PSI	2"	055155A	6.61
0-100 PSI	2"	046776A	6.61
0-160 PSI	2"	070791A	6.61
0-200 PSI	2"	102673A	6.61
0-300 PSI	2"	051805A	6.61
1/4" NPT Bottom Connection			
30"HgVac	2"	163712	6.61
30"HgVac-30 PSI	2"	167218	6.61
0-15 PSI	2"	047615A	6.61
0-30 PSI	2"	163149	6.61
0-60 PSI	2"	163269	6.61
0-100 PSI	2"	162988	6.61
0-160 PSI	2"	163270	6.61
0-200 PSI	2"	163147	6.61
0-300 PSI	2"	163148	6.61
0-1000 PSI	2"	047494A	6.61



Panel Mount Gauges



Specifications

Dial Size: 2", 2.5", 3.5"

Case: *P844U:* Drawn steel with studs, U-clamp and nuts; black corrosion-resistant paint, furnished with 2-piece U-clamp and nuts. *P845FF:* Drawn steel with 3-hole flange, black corrosion-resistant paint.

Ring and Window: Threaded, polycarbonate

Movement: Brass

Bourdon Tube: Pressure ranges above 15 PSI up to and including 1000 PSI are phosphor bronze, soft soldered. Vacuum, 15 PSI and ranges above 1000 PSI are beryllium copper, soft soldered up to and including 2000 PSI and silver brazed above 2000 PSI.

Accuracy: ±3-2-3% of span

Model Selection Guide

Pressure Range	Dial Size	Catalog Number	Price Each
P845FF Front Flange Panel Mount: 1/8" NPT Center Back Connection			
30" HgVac-0	2"	164439	\$27.58
0-30 PSI	2"	164441	27.58
0-60 PSI	2"	164442	27.58
0-100 PSI	2"	164443	27.58
0-160 PSI	2"	164445	27.58
0-300 PSI	2"	164446	27.58
0-600 PSI	2"	164448	27.58
30" HgVac-0	2.5"	164449	31.67
0-15 PSI	2.5"	164450	31.67
0-30 PSI	2.5"	164451	31.67
0-60 PSI	2.5"	164452	31.67
0-100 PSI	2.5"	164453	31.67
0-160 PSI	2.5"	164454	31.67
0-200 PSI	2.5"	164455	31.67
0-300 PSI	2.5"	164456	31.67
0-600 PSI	2.5"	164458	31.67
P845FF Front Flange Panel Mount: 1/4" NPT Center Back Connection			
30" HgVac-0	3.5"	138052A	64.73
0-15 PSI	3.5"	138053A	64.73
0-30 PSI	3.5"	138054A	64.73
0-60 PSI	3.5"	138055A	64.73
0-100 PSI	3.5"	138056A	64.73
0-200 PSI	3.5"	138057A	64.73
0-300 PSI	3.5"	138058A	64.73
0-600 PSI	3.5"	138059A	64.73

Need a range not shown? Just call.

Pressure Range	Dial Size	Catalog Number	Price Each
P844U U-Clamp Panel Mount: 1/8" NPT Center Back Connection			
30" HgVac-0	2"	164415	\$26.47
0-15 PSI	2"	164416	26.47
0-30 PSI	2"	164417	26.47
0-60 PSI	2"	164418	26.47
0-100 PSI	2"	164419	26.47
0-160 PSI	2"	164420	26.47
0-300 PSI	2"	164422	26.47
0-600 PSI	2"	164424	26.47
30" HgVac-0	2.5"	164425	31.04
0-15 PSI	2.5"	164426	31.04
0-30 PSI	2.5"	164427	31.04
0-60 PSI	2.5"	164428	31.04
0-100 PSI	2.5"	164429	31.04
0-160 PSI	2.5"	164430	31.04
0-200 PSI	2.5"	164431	31.04
0-300 PSI	2.5"	164432	31.04
0-600 PSI	2.5"	164434	31.04
P844U U-Clamp Panel Mount: 1/4" NPT Center Back Connection			
0-1000 PSI	2.5"	164435	31.04
0-3000 PSI	2.5"	164437	31.04
30" HgVac-0	3.5"	138024A	62.09
0-15 PSI	3.5"	138025A	62.09
0-30 PSI	3.5"	138026A	62.09
0-60 PSI	3.5"	138027A	62.09
0-100 PSI	3.5"	138028A	62.09
0-200 PSI	3.5"	138029A	62.09
0-300 PSI	3.5"	138030A	62.09
0-600 PSI	3.5"	138031A	62.09

Miniature Panel Mount Gauges



Specifications

Accuracy: ±3-2-3% of span

Movement: Brass

Window: Polycarbonate

Case: Drawn steel with studs, black corrosion-resistant paint, with zinc-plated U-clamp and nuts. Breakaway clamp permits adjustment for panel thickness up to 0.14"

Dial: 1.5", steel, cupped, white background with black markings. Aluminum pointer with black finish

Ring: Brass, threaded, chrome-plated finish

Bourdon Tube: Vacuum to 15 PSI: Beryllium copper, soft soldered; 15 to 600 PSI: Phosphor bronze, soft soldered; 600 PSI and Higher: Beryllium copper, silver brazed

Model Selection Guide

Pressure Range	Dial Size	Catalog Number	Price Each
P562 U-Clamp Panel Mount: 1/8" NPT Center Back Mount, Brass			
30" HgVac-0	1.5"	146245A	\$53.52
0-15 PSI	1.5"	146243A	53.52
0-30 PSI	1.5"	146244A	53.52
0-60 PSI	1.5"	146246A	53.52
0-100 PSI	1.5"	146259A	53.52
0-160 PSI	1.5"	146260A	53.52
0-300 PSI	1.5"	146291A	53.52
0-600 PSI	1.5"	266296A	53.52
0-2000 PSI	1.5"	146900A	53.52

WIKAI® Liquid-Filled Stainless Steel Industrial Gauges

213.53 Liquid-Filled Gauges

WIKAI 213.53 gauges feature a stainless steel case for protection in harsh environments. They are ideal for high vibration and pulsation applications.

Specifications

Accuracy: ±2-1-2% span

Working Temperature: Ambient: -40° to 140°F dry or silicone filled; -4° to 140°F Glycerine filled; Media temperature: 140°F max.

Case: 304 stainless steel

Wetted Parts: Copper alloy

Window: Polycarbonate

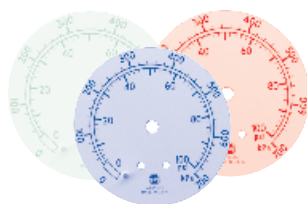
Dial: White ABS with black aluminum non-adjustable pointer; Single scale has PSI in black, dual scale has PSI values outside in black, BAR values inside in red.

Bezel Ring: Crimp-on stainless steel

Case-to-Socket O-ring: Dry or Silicone-filled: Viton; Glycerine-filled: EPDM

Standard Fill Fluid: Glycerine

Call for dual scale models, Buna-N o-ring or silicone fill.



**Need special dials?
Colors, brands, ranges...
We can get them all!
Call for details.**

Model Selection Guide

Pressure Range	Dial Size	Catalog Number	Price Each
Type 213.53, Single Scale (PSI), 1/4" NPT Bottom Connection			
30" Hg	2.5"	9767002	\$20.48
30"-0-30 PSI	2.5"	9767010	20.48
30"-0-60 PSI	2.5"	9767029	20.48
0-15 PSI	2.5"	9767037	19.64
0-30 PSI	2.5"	9767045	19.64
0-60 PSI	2.5"	9767053	19.64
0-100 PSI	2.5"	9767061	19.64
0-160 PSI	2.5"	9767070	19.64
0-200 PSI	2.5"	9767088	19.64
0-300 PSI	2.5"	9767096	19.64
0-400 PSI	2.5"	9767100	19.64
0-600 PSI	2.5"	9767118	19.64
0-1000 PSI	2.5"	9767126	19.64
0-1500 PSI	2.5"	9767134	21.83
0-2000 PSI	2.5"	9767142	21.83
0-3000 PSI	2.5"	9767150	21.83
0-5000 PSI	2.5"	9767169	21.83
0-10000 PSI	2.5"	9767177	28.03
Type 213.53, Single Scale (PSI), 1/4" NPT Center Back Mount			
30" Hg	2.5"	9767185	21.32
0-30 PSI	2.5"	9767193	20.48
0-60 PSI	2.5"	9767202	20.48
0-100 PSI	2.5"	9767215	20.48
0-160 PSI	2.5"	9767223	20.48
0-200 PSI	2.5"	9767231	20.48
0-300 PSI	2.5"	9767240	20.48
0-600 PSI	2.5"	9768947	20.48
0-1000 PSI	2.5"	9767258	20.48
0-1500 PSI	2.5"	9768165	22.67
0-2000 PSI	2.5"	9768939	22.67
0-3000 PSI	2.5"	9767266	22.67
0-5000 PSI	2.5"	9767274	22.67
0-10000 PSI	2.5"	9767282	28.73

High Accuracy Digital Pressure Gauges for Liquids and Gases



Specifications

Accuracy: ±0.25% full scale or better, ±1 least significant digit

Material: Extruded aluminum case, Epoxy powder coated, polycarbonate cover, front and rear gaskets. Light gray body, light gray/blue front; Pressure/Vacuum Connection: 1/4" NPT male; Wetted parts: 316 stainless steel

Display: 3-1/2 digit LCD, 1/2" height; for ranges up to 1999; 4 digit LCD, 0.4" height, for ranges 2000+; 3 readings/sec nominal display update rate; DPG1000BBL: Red LCD backlight activated by holding ON button

Controls and Location: Display zero/span; non-interactive, ±15% range. Top-accessible multi-turn potentiometers.

Burst Pressure: Lesser of 4x rated pressure min. or 10000 PSI

Overpressure: 2x rated pressure min. (5000 PSI for 3000 PSI range, 7500 PSI for 5000 PSI range.)

Battery: DPG1000B: 3V lithium coin cell CR2354 or equivalent/1000 hours; 2 AAA alkaline for ranges 2000 and higher/500 hours; DPG1000BBL: Two replaceable 1.5 volt AAA alkaline; Ranges to 1999: 75 to 1000 hours; Ranges 2000+: 75 to 500 hours. (Depends on backlight usage)

Low Battery Indication: Ranges to 1999: LOBAT displays at battery replacement; Ranges 2000+: LOW BAT displays at 40% power remaining. Decimal points flash when battery must be replaced.

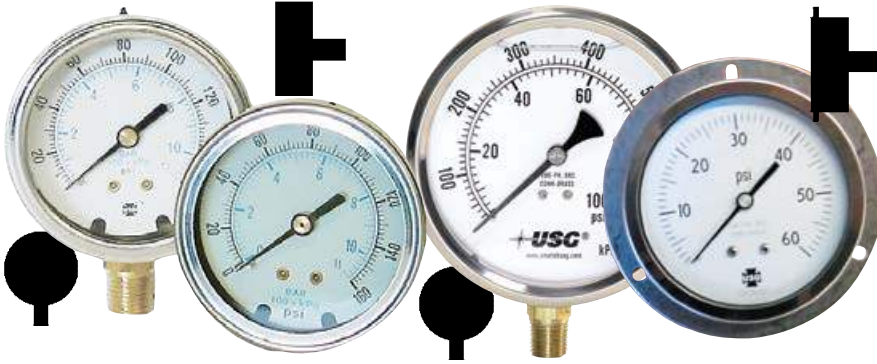
Auto Shutoff: 5 minutes standard

Operating Temperature: -20° to 85°C

Model Selection Guide

Description	Catalog Number	Price	
DPG1000 Digital Pressure Gauge: ±0.25% Accuracy			
Battery Powered	0-15.00 PSIG	DPG1000B-15PSIG-5	\$319.00
	0-100.0 PSIG	DPG1000B-100PSIG-5	319.00
	0-200 PSIG	DPG1000B-200PSIG-5	319.00
	0-500 PSIG	DPG1000B-500PSIG-5	319.00
	0-1000 PSIG	DPG1000B-1000PSIG-5	319.00
	0-3000 PSIG	DPG1000B-3000PSIG-5	319.00
Backlit, Battery Powered	0-5000 PSIG	DPG1000B-5000PSIG-5	319.00
	0-15.00 PSIG	DPG1000BBL-15PSIG-5	349.00
	0-100.0 PSIG	DPG1000BBL-100PSIG-5	349.00
	0-200 PSIG	DPG1000BBL-200PSIG-5	349.00
	0-500 PSIG	DPG1000BBL-500PSIG-5	349.00
	0-1000 PSIG	DPG1000BBL-1000PSIG-5	349.00
	0-3000 PSIG	DPG1000BBL-3000PSIG-5	349.00
	0-5000 PSIG	DPG1000BBL-5000PSIG-5	349.00

Liquid-Filled Stainless Steel Industrial Gauges



Specifications

Size: 1.5" to 4"

Accuracy: 2.5% of full scale

Materials: Case and ring: 304 stainless steel; Window: Polycarbonate; Seals: Buna-N; Pointer: Black-finished Galvalume; Dial: Galvalume, white background with blue and black markings; Movement: Brass; Bourdon Tube: Phosphor bronze

Connections: Brass; 1.5" Dial: 1/8" NPT center back mount; 2" and 2.5" Dial: 1/4" NPT lower or center back mount

Standard Fill Fluid: Glycerine

Model Selection Guide

Pressure Range	Dial Size	Catalog Number	Price Each
Series 1559: 1/8" NPT Center Back Stem Mount			
0-30 PSI	1.5"	166664	\$26.81
0-60 PSI	1.5"	166665	26.81
0-100 PSI	1.5"	166666	26.81
0-160 PSI	1.5"	166667	26.81
0-300 PSI	1.5"	166668	26.81
Series 1555: 1/4" NPT Lower Stem Mount			
0-30 PSI	2"	165282	26.85
0-60 PSI	2"	165283	26.85
0-100 PSI	2"	165284	26.85
0-160 PSI	2"	165285	26.85
0-300 PSI	2"	165286	26.85
0-600 PSI	2"	165287	26.85
30" HgVac-0 PSI	2.5"	171722A	30.88
30" HgVac-30 PSI	2.5"	171724A	30.88
30" HgVac-60 PSI	2.5"	171725A	30.88
30" HgVac-100 PSI	2.5"	171726A	30.88
0-15 PSI	2.5"	171728A	30.88
0-30 PSI	2.5"	165296	30.88
0-60 PSI	2.5"	165297	30.88
0-100 PSI	2.5"	165298	30.88
0-160 PSI	2.5"	165299	30.88
0-200 PSI	2.5"	171729A	30.88
0-300 PSI	2.5"	165300	30.88
0-400 PSI	2.5"	171730A	30.88
0-600 PSI	2.5"	165301	30.88
0-1000 PSI	2.5"	165302	30.88
0-1500 PSI	2.5"	171731A	30.88
0-2000 PSI	2.5"	165377	30.88
0-3000 PSI	2.5"	165378	30.88
0-5000 PSI	2.5"	171732A	30.88
30" HgVac-0 PSI	4"	171967A	58.58
30"-0-15 PSI	4"	171968A	58.58
30"-0-30 PSI	4"	171969A	58.58
30"-0-60 PSI	4"	171970A	58.58
30"-0-100 PSI	4"	171971A	58.58
0-15 PSI	4"	171972A	58.58
0-30 PSI	4"	171973A	58.58
0-60 PSI	4"	171974A	58.58
0-100 PSI	4"	171975A	58.58
0-160 PSI	4"	171976A	58.58
0-200 PSI	4"	171977A	58.58
0-300 PSI	4"	171978A	58.58
0-600 PSI	4"	171979A	58.58
0-1000 PSI	4"	171980A	58.58
0-1500 PSI	4"	171981A	58.58
0-2000 PSI	4"	171982A	58.58
0-3000 PSI	4"	171983A	58.58
0-6000 PSI	4"	171984A	58.58

Pressure Range	Dial Size	Catalog Number	Price Each
Series 1559: 1/4" NPT Center Back Stem Mount			
0-30 PSI	2"	165289	\$28.03
0-60 PSI	2"	165290	28.03
0-100 PSI	2"	165291	28.03
0-160 PSI	2"	165292	28.03
0-1000 PSI	2"	165295	28.03
30" HgVac-0 PSI	2.5"	171733A	30.71
30" HgVac-30 PSI	2.5"	171735A	30.71
30" HgVac-100 PSI	2.5"	171737A	30.71
0-15 PSI	2.5"	171739A	30.71
0-30 PSI	2.5"	165303	30.71
0-60 PSI	2.5"	165304	30.71
0-100 PSI	2.5"	165305	30.71
0-160 PSI	2.5"	165306	30.71
0-200 PSI	2.5"	171740A	30.71
0-300 PSI	2.5"	165307	30.71
0-600 PSI	2.5"	165308	30.71
0-1000 PSI	2.5"	165309	30.71
0-2000 PSI	2.5"	165380	30.71
0-3000 PSI	2.5"	165381	30.71
Series 1558: 1/4" NPT Center Back Stem, Front Flange Panel Mount			
30" HgVac-0 PSI	2.5"	172317A	34.37
30" HgVac-30 PSI	2.5"	172319A	34.37
30" HgVac-100 PSI	2.5"	172321A	34.37
0-15 PSI	2.5"	172323A	34.37
0-30 PSI	2.5"	172324A	34.37
0-60 PSI	2.5"	172325A	34.37
0-100 PSI	2.5"	172326A	34.37
0-160 PSI	2.5"	172327A	34.37
0-200 PSI	2.5"	172328A	34.37
0-300 PSI	2.5"	172329A	34.37
0-400 PSI	2.5"	172330A	34.37
0-600 PSI	2.5"	172331A	34.37
0-1000 PSI	2.5"	172332A	34.37
0-2000 PSI	2.5"	172334A	34.37
0-3000 PSI	2.5"	172335A	34.37
0-5000 PSI	2.5"	172336A	34.37
30" HgVac-0 PSI	4"	171985A	58.58
30"-0-30 PSI	4"	171987A	58.58
30"-0-100 PSI	4"	171989A	58.58
0-15 PSI	4"	171990A	58.58
0-30 PSI	4"	171991A	58.58
0-60 PSI	4"	171992A	58.58
0-100 PSI	4"	171993A	58.58
0-160 PSI	4"	171994A	58.58
0-200 PSI	4"	171995A	58.58
0-300 PSI	4"	171996A	58.58
0-600 PSI	4"	171997A	58.58
0-1000 PSI	4"	171998A	58.58
0-2000 PSI	4"	172000A	58.58
0-3000 PSI	4"	172001A	58.58
0-6000 PSI	4"	172002A	58.58

Rotary and Smart Actuator Motors

Instrument Valves

Process Control Accessories

Pressure and Temperature Switches

ASCO Solenoid Valves

Pressure Gauges

High Accuracy Stainless Steel Liquid Fillable Pressure Gauges

232.54 Stainless Steel Gauges

WIKA 232.54 gauges are designed for use in process, chemical applications, oil exploration, and production, and pollution control equipment




Specifications

Accuracy: ±2-1-2% span

Case: 304 stainless steel

Wetted Parts: 316 Stainless Steel

Window: Safety Glass

Dial: White aluminum with black aluminum adjustable pointer.

Bezel Ring: Polished Stainless Steel

Call for dual scale models or other materials.

Model Selection Guide

Pressure Range	Dial Size	Catalog Number	Price Each
Type 232.54, Single Scale (PSI), 1/4" NPT Bottom Connection			
30" Hg	2.5"	9744827	\$57.71
30"-0-15 PSI	2.5"	9744835	57.71
30"-0-30 PSI	2.5"	9744843	57.71
30"-0-60 PSI	2.5"	9744851	57.71
30"-0-100 PSI	2.5"	9744860	57.71
0-15 PSI	2.5"	9744894	55.45
0-30 PSI	2.5"	9744908	55.45
0-60 PSI	2.5"	9744916	55.45
0-100 PSI	2.5"	9744924	55.45
0-160 PSI	2.5"	9744932	55.45
0-200 PSI	2.5"	9744940	55.45
0-300 PSI	2.5"	9744959	55.45
0-400 PSI	2.5"	9744967	55.45
0-600 PSI	2.5"	9744975	55.45
0-800 PSI	2.5"	9744983	55.45
0-1000 PSI	2.5"	9744991	55.45
0-1500 PSI	2.5"	9745009	60.03
0-2000 PSI	2.5"	9745017	60.03
0-3000 PSI	2.5"	9745025	60.03
0-5000 PSI	2.5"	9745033	60.03
0-10000 PSI	2.5"	9745041	60.03

Pressure Range	Dial Size	Catalog Number	Price Each
Type 232.54, Single Scale (PSI), 1/4" NPT Bottom Connection			
30" Hg	4"	9745300	\$97.57
30"-0-15 PSI	4"	9745319	97.57
30"-0-30 PSI	4"	9745327	97.57
30"-0-60 PSI	4"	9745335	97.57
30"-0-100 PSI	4"	9745343	97.57
0-15 PSI	4"	9745378	94.43
0-30 PSI	4"	9745386	94.43
0-60 PSI	4"	9745394	94.43
0-100 PSI	4"	9745408	94.43
0-160 PSI	4"	9745416	94.43
0-200 PSI	4"	9745424	94.43
0-300 PSI	4"	9745432	94.43
0-400 PSI	4"	9745440	94.43
0-600 PSI	4"	9745459	94.43
0-800 PSI	4"	9745467	94.43
0-1000 PSI	4"	9745475	94.43
0-1500 PSI	4"	9745483	98.14
0-2000 PSI	4"	9745491	98.14
0-3000 PSI	4"	9745505	98.14
0-5000 PSI	4"	9745513	98.14
0-10000 PSI	4"	9745521	98.14

Pressure Range	Dial Size	Catalog Number	Price Each
Type 232.54, Single Scale (PSI), 1/2" NPT Bottom Connection			
30" Hg	4"	9745548	\$97.57
30"-0-15 PSI	4"	9745556	97.57
30"-0-30 PSI	4"	9745564	97.57
30"-0-60 PSI	4"	9745572	97.57
30"-0-100 PSI	4"	9745580	97.57
0-15 PSI	4"	9745610	94.43
0-30 PSI	4"	9745629	94.43
0-60 PSI	4"	9745637	94.43
0-100 PSI	4"	9745645	94.43
0-160 PSI	4"	9745653	94.43
0-200 PSI	4"	9745661	94.43
0-300 PSI	4"	9745670	94.43
0-400 PSI	4"	9745688	94.43
0-600 PSI	4"	9745696	94.43
0-800 PSI	4"	9745700	94.43
0-1000 PSI	4"	9745718	94.43
0-1500 PSI	4"	9745726	98.14
0-2000 PSI	4"	9745734	98.14
0-3000 PSI	4"	9745742	98.14
0-5000 PSI	4"	9745750	98.14
0-10000 PSI	4"	9745769	98.14

High Accuracy Stainless Steel Liquid Filled Pressure Gauges



Call for U-clamp and flange mount models.

USG 656 series gauges are ideal for corrosive environments or for use on equipment subject to excessive vibration and pulsation. The liquid fill minimizes the effects of severe environments, protects the gauge internals and provides continuous lubrication on the mechanism, all adding up to extended service life.

Specifications

- Accuracy:** 63mm: ±1.6% full scale; 100mm: ±1.0% full scale
- Overrange Protection:** 125% full scale
- Working Temperature:** Ambient: -40°F to 140°F (-40°C to 60°C); Fluid: -4°F to 176°F (-20°C to 80°C) Pressure Connection: 316L stainless steel; Element: 316L stainless steel, C-type or Helical-type Bourdon tube; 100mm C type
- Case Pressure Relief:** Top: Rubber Disc; Back: Rubber disc
- Case and Bezel Ring:** 304 stainless steel; bayonet type
- Movement:** 304 stainless steel
- Window:** 63mm: Polycarbonate; 100mm: Laminated shatter-resistant glass
- Dial:** White aluminum with black lettering
- Pointer:** Aluminum alloy, black painted
- Standard Fill Fluid:** Glycerine



Model Selection Guide

Pressure Range	Dial Size	Catalog Number	Price Each
656 Series, 1/4" NPT Center Back Connection			
0-30" Hg	2.5"	256024	\$60.31
30-0-15 PSI	2.5"	256025	60.31
30-0-30 PSI	2.5"	256026	60.31
30-0-60 PSI	2.5"	256027	60.31
30-0-100 PSI	2.5"	256028	60.31
30-0-150 PSI	2.5"	256029	60.31
0-15 PSI	2.5"	256031	60.31
0-30 PSI	2.5"	256032	60.31
0-60 PSI	2.5"	256033	60.31
0-100 PSI	2.5"	256034	60.31
0-160 PSI	2.5"	256035	60.31
0-200 PSI	2.5"	256036	60.31
0-300 PSI	2.5"	256037	60.31
0-400 PSI	2.5"	256038	60.31
0-600 PSI	2.5"	256039	60.31
0-1000 PSI	2.5"	256040	60.31
0-1500 PSI	2.5"	256041	60.31
0-2000 PSI	2.5"	256042	60.31
0-3000 PSI	2.5"	256043	60.31
0-4000 PSI	2.5"	256044	60.31
0-5000 PSI	2.5"	256045	60.31
0-6000 PSI	2.5"	256046	60.31
0-10000 PSI	2.5"	256047	60.31

Pressure Range	Dial Size	Catalog Number	Price Each
656 Series (Replaces 550 Series), 1/4" NPT Bottom Connection			
0-30" Hg	2.5"	256000	\$54.04
30-0-15 PSI	2.5"	256001	54.04
30-0-30 PSI	2.5"	256002	54.04
30-0-60 PSI	2.5"	256003	54.04
30-0-100 PSI	2.5"	256004	54.04
30-0-150 PSI	2.5"	256005	54.04
0-15 PSI	2.5"	256007	54.04
0-30 PSI	2.5"	256008	54.04
0-60 PSI	2.5"	256009	54.04
0-100 PSI	2.5"	256010	54.04
0-160 PSI	2.5"	256011	54.04
0-200 PSI	2.5"	256012	54.04
0-300 PSI	2.5"	256013	54.04
0-400 PSI	2.5"	256014	54.04
0-600 PSI	2.5"	256015	54.04
0-1000 PSI	2.5"	256016	54.04
0-1500 PSI	2.5"	256017	54.04
0-2000 PSI	2.5"	256018	54.04
0-3000 PSI	2.5"	256019	54.04
0-4000 PSI	2.5"	256020	54.04
0-5000 PSI	2.5"	256021	54.04
0-6000 PSI	2.5"	256022	54.04
0-10000 PSI	2.5"	256023	54.04

Pressure Range	Dial Size	Catalog Number	Price Each
656 Series, 1/4" NPT Bottom Connection			
0-30" Hg	4"	356000	\$110.61
30-0-100 PSI	4"	356004	110.61
30-0-150 PSI	4"	356005	110.61
0-15 PSI	4"	356007	110.61
0-30 PSI	4"	356008	110.61
0-60 PSI	4"	356009	110.61
0-100 PSI	4"	356010	110.61
0-160 PSI	4"	356011	110.61
0-200 PSI	4"	356012	110.61
0-300 PSI	4"	356013	110.61
0-400 PSI	4"	356014	110.61
0-600 PSI	4"	356015	110.61
0-800 PSI	4"	356016	110.61
0-1000 PSI	4"	356017	110.61
0-1500 PSI	4"	356018	110.61
0-2000 PSI	4"	356019	110.61
0-3000 PSI	4"	356020	110.61
0-6000 PSI	4"	356021	110.61
0-10000 PSI	4"	356022	110.61
0-14500 PSI	4"	356023	110.61
0-23000 PSI	4"	356024	110.61

Pressure Range	Dial Size	Catalog Number	Price Each
656 Series, 1/2" NPT Bottom Connection			
0-30" Hg	4"	356025	\$110.61
30-0-100 PSI	4"	356029	110.61
30-0-150 PSI	4"	356030	110.61
0-15 PSI	4"	356032	110.61
0-30 PSI	4"	356033	110.61
0-60 PSI	4"	356034	110.61
0-100 PSI	4"	356035	110.61
0-160 PSI	4"	356036	110.61
0-200 PSI	4"	356037	110.61
0-300 PSI	4"	356038	110.61
0-400 PSI	4"	356039	110.61
0-600 PSI	4"	356040	110.61
0-800 PSI	4"	356041	110.61
0-1000 PSI	4"	356042	110.61
0-1500 PSI	4"	356043	110.61
0-2000 PSI	4"	356044	110.61
0-3000 PSI	4"	356045	110.61
0-6000 PSI	4"	356046	110.61
0-10000 PSI	4"	356047	110.61
0-14500 PSI	4"	356048	110.61
0-23000 PSI	4"	356049	110.61

Rotary and Smart Actuator Motors

Instrument Valves

Process Control Accessories

Pressure and Temperature Switches

ASCO Solenoid Valves

Pressure Gauges

Solid Front Process Gauges

212.34 XSEL Process Gauge

Withstands vibration, corrosive media and environments and extreme temperatures.

Specifications

Accuracy: ±0.5% span

Case and Ring: Black Pocan®, Acrylic window

Dial: White aluminum with black aluminum adjustable pointer

Wetted Parts: Copper alloy

Brass
Wetted
Parts



Model Selection Guide

Pressure Range	Dial Size	Catalog Number	Price Each
Type 212.34, Single Scale (PSI), 1/2" NPT Bottom Connection			
30" Hg	4.5"	9834257	\$81.26
30"-0-15 PSI	4.5"	9834265	81.26
30"-0-30 PSI	4.5"	9834273	81.26
30"-0-60 PSI	4.5"	9834281	81.26
30"-0-100 PSI	4.5"	9834290	81.26
30"-0-160 PSI	4.5"	9834303	81.26
0-15 PSI	4.5"	9834338	81.26
0-30 PSI	4.5"	9834346	81.26
0-60 PSI	4.5"	9834354	81.26
0-100 PSI	4.5"	9834362	81.26
0-160 PSI	4.5"	9834370	81.26
0-200 PSI	4.5"	9834389	81.26
0-300 PSI	4.5"	9834397	81.26
0-400 PSI	4.5"	9834400	81.26
0-600 PSI	4.5"	9834419	81.26
0-800 PSI	4.5"	9834990	81.26
0-1000 PSI	4.5"	9834427	81.26

632.34 Low Pressure Process Gauge

Measure the pressure of gaseous media from 10" H₂O to 10 PSI.

Specifications

Accuracy: ±2-1-2% span

Case: Black thermoplastic with threaded thermoplastic bezel ring

Dial: White aluminum with black adjustable pointer

Window: Acrylic

Wetted Parts: 316L stainless steel



Model Selection Guide

Outer Scale	Inner Scale	Dial Size	Catalog Number	Price Each
Type 632.34, Single Scale (PSI), Stainless 1/4" NPT Bottom Connection				
10" H ₂ O	6 oz/in ²	4.5"	4217187	\$567.98
15" H ₂ O	9 oz/in ²	4.5"	4217195	567.98
20" H ₂ O	12 oz/in ²	4.5"	4217209	567.98
30" H ₂ O	18 oz/in ²	4.5"	4217217	567.98
40" H ₂ O	24 oz/in ²	4.5"	4217225	567.98
60" H ₂ O	35 oz/in ²	4.5"	4217233	567.98
80" H ₂ O	45 oz/in ²	4.5"	4217241	567.98
100" H ₂ O	57 oz/in ²	4.5"	4217250	567.98
150" H ₂ O	90 oz/in ²	4.5"	4217268	567.98
0-5 PSI	10" Hg	4.5"	4217152	567.98
0-8 PSI	16" Hg	4.5"	4217161	567.98
0-10 PSI	20" Hg	4.5"	4217179	567.98



232.34 XSEL Process Gauge

Withstands vibration, corrosive media and environments and extreme temperatures.

Specifications

Accuracy: ±0.5% span

Case and Ring: Black Pocan®, Acrylic window

Dial: White aluminum with black aluminum adjustable pointer

Wetted Parts: 316L stainless steel

316L SS
Wetted
Parts



Model Selection Guide

Pressure Range	Dial Size	Catalog Number	Price Each
Type 232.34, Single Scale (PSI), 1/2" NPT Bottom Connection			
30" Hg	4.5"	9834729	\$88.06
30"-0-15 PSI	4.5"	9834737	88.06
30"-0-30 PSI	4.5"	9834745	88.06
30"-0-60 PSI	4.5"	9834753	88.06
30"-0-100 PSI	4.5"	9834761	88.06
0-15 PSI	4.5"	9834800	88.06
0-30 PSI	4.5"	9834818	88.06
0-60 PSI	4.5"	9834826	88.06
0-100 PSI	4.5"	9834834	88.06
0-160 PSI	4.5"	9834842	88.06
0-200 PSI	4.5"	9834850	88.06
0-300 PSI	4.5"	9834869	88.06
0-400 PSI	4.5"	9834877	88.06
0-600 PSI	4.5"	9834885	88.06
0-800 PSI	4.5"	9834974	88.06
0-1000 PSI	4.5"	9834893	88.06
0-1500 PSI	4.5"	9834907	88.06
0-2000 PSI	4.5"	9834915	88.06
0-3000 PSI	4.5"	9834923	88.06
0-5000 PSI	4.5"	9834931	88.06

1931 Aluminum Case Process Gauge

Accuracy: ±0.5% of span (Grade 2A)

Movement: Geared ARC-LOC with 300 series stainless steel components.



Bourdon Tube: 316 SS /TIG welded

Dial: Aluminum, white with black markings; Anodized aluminum pointer; Acrylic window

Connection: 316 stainless steel

Case and Ring: Cast aluminum, black finish, stainless steel pressure-relieving back



Model Selection Guide

Pressure Range	Dial Size	Catalog Number	Price Each
30" Hg Vac-0 PSI	4.5"	150215X	\$167.21
30" Hg Vac-30 PSI	4.5"	150217X	167.21
30" Hg Vac-100 PSI	4.5"	150219X	167.21
0-15 PSI	4.5"	150220X	167.21
0-30 PSI	4.5"	150221X	167.21
0-60 PSI	4.5"	150222X	167.21
0-100 PSI	4.5"	150223X	167.21
0-160 PSI	4.5"	150224X	167.21
0-200 PSI	4.5"	150225X	167.21
0-300 PSI	4.5"	150226X	167.21
0-400 PSI	4.5"	150227X	167.21
0-600 PSI	4.5"	150228X	167.21
0-1000 PSI	4.5"	150230X	167.21

WIKAL® Solid Front Direct Drive Pressure Gauges

For use where high dynamic pressure pulsations, vibration, or shock are present. For corrosive environments and gaseous or liquid media that will not obstruct the pressure system.

Specifications

Accuracy: ±0.5% of span

Temperature: Ambient: - 65° to 190° F; Medium: - 65° to 400° F

Case: Fiberglass-reinforced thermoplastic; Solid front, blowout back; Turret-style case with flange lugs; Acrylic window and Buna-N gasket; Weather Resistant (NEMA 3/IP54)

Bourdon Tube/Wetted Parts: Material: Inconel X-750; 316L SS socket and capillary; All connections micro-brazed/welded/helium leak tested

Dial: White aluminum; black aluminum adjustable pointer;

Working Pressure: Steady: full scale value; Fluctuating: 0.9 x full-scale value; Short time: 1.5 x full-scale value

Pressure Connection: 316L SS; Lower back mount; 1/4" or 1/2" NPT



Ranges to 20,000 psi ±0.5% accuracy

Ranges to 10,000 psi ±0.25% accuracy

Filter: Porous metal slug – 316 SS; Porosity: 25 to 50 microns

Certification: Traceable to NIST with data (test gauge only)

Model Selection Guide

Pressure Range	Dial Size	Catalog Number	Price Each
Series 34 Accu-Drive Process Gauge, 1/2" NPT Bottom Stem Mount			
-30" Hg-0-15 PSI	4.5"	3494-1P21Z-C94-DZZZ	\$203.04
-30" Hg-0-30 PSI	4.5"	3494-1P48Z-C94-DZZZ	178.20
-30" Hg-0-60 PSI	4.5"	3494-1P22Z-C94-DZZZ	178.20
-30" Hg-0-100 PSI	4.5"	3494-1P23Z-C94-DZZZ	178.20
-30" Hg-0-160 PSI	4.5"	3494-1P24Z-C94-DZZZ	178.20
0-30 PSI	4.5"	3494-5P21Z-C94-DZZZ	203.04
0-60 PSI	4.5"	3494-5P22Z-C94-DZZZ	178.20
0-100 PSI	4.5"	3494-5P23Z-C94-DZZZ	178.20
0-150 PSI	4.5"	3494-5P24Z-C94-DZZZ	178.20
0-160 PSI	4.5"	3494-5P45Z-C94-DZZZ	178.20
0-200 PSI	4.5"	3494-5P25Z-C94-DZZZ	178.20
0-300 PSI	4.5"	3494-5P26Z-C94-DZZZ	178.20
0-500 PSI	4.5"	3494-5P27Z-C94-DZZZ	178.20
0-600 PSI	4.5"	3494-5P28Z-C94-DZZZ	178.20
0-1000 PSI	4.5"	3494-5P29Z-C94-DZZZ	178.20
0-1500 PSI	4.5"	3494-5P31Z-C94-DZZZ	178.20
0-2000 PSI	4.5"	3494-5P32Z-C94-DZZZ	178.20
0-3000 PSI	4.5"	3494-5P33Z-C94-DZZZ	178.20

Pressure Range	Dial Size	Catalog Number	Price Each
Series 34 Accu-Drive Test Gauge, 1/2" NPT Bottom Stem Mount			
-30" Hg-0-15 PSI	4.5"	3444-1P21Z-C94-ZZZZ	\$359.64
-30" Hg-0-30 PSI	4.5"	3444-1P48Z-C94-ZZZZ	334.80
-30" Hg-0-60 PSI	4.5"	3444-1P22Z-C94-ZZZZ	334.80
-30" Hg-0-100 PSI	4.5"	3444-1P23Z-C94-ZZZZ	334.80
-30" Hg-0-160 PSI	4.5"	3444-1P24Z-C94-ZZZZ	334.80
0-30 PSI	4.5"	3444-5P21Z-C94-ZZZZ	359.64
0-60 PSI	4.5"	3444-5P22Z-C94-ZZZZ	334.80
0-100 PSI	4.5"	3444-5P23Z-C94-ZZZZ	334.80
0-150 PSI	4.5"	3444-5P24Z-C94-ZZZZ	334.80
0-160 PSI	4.5"	3444-5P45Z-C94-ZZZZ	334.80
0-200 PSI	4.5"	3444-5P25Z-C94-ZZZZ	334.80
0-300 PSI	4.5"	3444-5P26Z-C94-ZZZZ	334.80
0-500 PSI	4.5"	3444-5P27Z-C94-ZZZZ	334.80
0-600 PSI	4.5"	3444-5P28Z-C94-ZZZZ	334.80
0-1000 PSI	4.5"	3444-5P29Z-C94-ZZZZ	334.80
0-1500 PSI	4.5"	3444-5P31Z-C94-ZZZZ	334.80
0-2000 PSI	4.5"	3444-5P32Z-C94-ZZZZ	334.80
0-3000 PSI	4.5"	3444-5P33Z-C94-ZZZZ	334.80

WIKAL 232.34DD Direct Drive Process Gauge



Engineered to withstand vibration, corrosive media, corrosive environments and a wide range of temperature extremes.

Specifications

Accuracy: ±0.5% span

Case: Yellow thermoplastic, solid front; Clear acrylic window

Wetted Parts: Inconel® X-750 & 316 SS

Dial: White aluminum with stop pin at 6 o'clock, black aluminum adjustable pointer

Bezel Ring: Stainless steel

Model Selection Guide

Pressure Range	Dial Size	Catalog Number	Price Each
Type 232.34DD, Single Scale (PSI), 1/2" NPT Bottom Connection			
30"-0-30 PSI	4.5"	52386163	\$211.56
30"-0-60 PSI	4.5"	52386180	211.56
30"-0-150 PSI	4.5"	52386201	211.56
30"-0-300 PSI	4.5"	52386210	211.56
0-30 PSI	4.5"	52386228	211.56
0-60 PSI	4.5"	52386236	211.56
0-100 PSI	4.5"	52386244	211.56
0-160 PSI	4.5"	52386252	211.56
0-200 PSI	4.5"	52386261	211.56
0-300 PSI	4.5"	52386279	211.56
0-500 PSI	4.5"	52386287	211.56
0-1000 PSI	4.5"	52386295	211.56
0-1500 PSI	4.5"	52386317	211.56
0-2000 PSI	4.5"	52386325	211.56
0-3000 PSI	4.5"	52386333	211.56
0-5000 PSI	4.5"	52386341	211.56
0-10000 PSI	4.5"	52386350	211.56

Don't see a pressure range you need? Call us. Looking for a liquid fill? Just ask!

Rotary and Smart Actuator Motors

Instrument Valves

Process Control Accessories

Pressure and Temperature Switches

ASCO Solenoid Valves

Pressure Gauges

Special Service Gauges

Low Pressure Diaphragm Gauges



Specifications

Accuracy: ±3-2-3% of span

Materials: Case: Black painted steel; Window: Acrylic; Movement: Brass sector, nickel silver pinion, arbor, and pivots; Diaphragm: Phosphor bronze

Connection: Brass, 1/4" NPT bottom

Model Selection Guide

Pressure Range	Dial Size	Catalog Number	Price Each
P734 Gauge: 1/4" NPT Bottom Stem Mount			
0-15" H ₂ O	2.5"	161963A	\$74.55
0-35" H ₂ O	2.5"	161964A	74.55
0-60" H ₂ O	2.5"	162787A	74.55
0-100" H ₂ O	2.5"	161965A	74.55
0-200" H ₂ O	2.5"	161966A	74.55
0- 20 Oz.	2.5"	161967A	74.55
0- 32 Oz.	2.5"	161968A	74.55
0- 36 Oz.	2.5"	161969A	74.55
0- 5 PSI	2.5"	161970A	74.55
0- 10 PSI	2.5"	161971A	74.55
0-20 Oz./0-35" H ₂ O	2.5"	161972A	74.55

Welding and Compressed Gas Regulator Gauges



Specifications

Accuracy: ±3-2-3% of span

Approvals: UL approved for compressed gas services. Cleanliness per ANSI B40.1-1980.

Connection: 1/4" NPT bottom brass

Materials: Case: Drawn brass, polished finish, with pressure relief in back of case; Ring and window: Polycarbonate; Dial: Steel, white background, black markings. Major graduations and "USE NO OIL" in red; Movement: Brass; Bourdon tube: P601: Phosphor bronze, silver brazed; P612: Admiralty brass 30, phosphor bronze 100, all soft-soldered.

Model Selection Guide

Figure Number	Dial Size	Pressure Range	Catalog Number	Price Each
P612	2"	0- 30 PSI	165509A	\$27.58
	2"	0- 60 PSI	165567A	27.58
	2"	0- 100 PSI	164257A	27.58
	2"	0- 200 PSI	164259A	27.58
	2"	0- 400 PSI	164261A	27.58
	2"	0- 600 PSI	164262A	27.58
	2.5"	0- 30 PSI	165616A	37.78
	2.5"	0- 60 PSI	165660A	37.78
	2.5"	0- 100 PSI	164285A	37.78
	2.5"	0- 200 PSI	164287A	37.78
P601	2.5"	0- 400 PSI	164289A	37.78
	2.5"	0- 500 PSI	165064A	37.78
	2.5"	0- 600 PSI	164290A	37.78
	2"	0- 3000 PSI	144202A	27.58
	2"	0- 4000 PSI	143403A	27.58
	2.5"	0- 3000 PSI	144203A	37.78
2.5"	0- 4000 PSI	143404A	37.78	



Boiler Service Gauges

For use on hot water heating boilers, these gauges give accurate indication of both temperature and pressure.



Specifications

Accuracy: Pressure: ±3-2-3% span; Temperature: ±3% span

Materials: Case: Drawn steel, friction fit, black corrosion-resistant paint; Window: Acrylic; Movement and socket: Brass

Model Selection Guide

Pressure Range	Dial Size	Catalog Number	Price Each
1/4" NPT Center Back Connection			
0-75 PSI/60-320°F	2.5" (0.78" shank)	199960	\$43.37
0-75 PSI/60-320°F	2.5" (2.02" shank)	199961	46.97

HVAC Contractor's Gauge



Specifications

Accuracy: 1.5-1-1.5% of span (exceeds Grade A ANSI-ASME B40.1)

Materials: Ring: Aluminum; Case: Black aluminum; pressure relief grommet; acrylic window; Dial: White steel; black aluminum, adjustable pointer; Movement: Precision geared brass; Bourdon tube: Phosphor bronze or Beryllium copper.

Model Selection Guide

Pressure Range	Dial Size	Catalog Number	Price Each
USG 5105 Contractor's Gauge: 1/4" NPT Bottom Male Brass Connection			
30" HgVac	4.5"	160803A	\$27.77
0- 15 PSI	4.5"	160808A	27.77
0- 30 PSI	4.5"	160809A	27.77
0- 60 PSI	4.5"	160810A	27.77
0- 100 PSI	4.5"	160811A	27.77
0- 160 PSI	4.5"	160812A	27.77
0- 200 PSI	4.5"	160813A	27.77
0- 300 PSI	4.5"	160814A	27.77

Sprinkler System Gauge

Specifications

Accuracy: ±3-2-3% span per ASME B40.1 Grade B

Connection: 1/4" NPT bottom, brass

Materials: Case: Black polycarbonate; polycarbonate window; Movement/Connection: Copper alloy; Bourdon tube: C-type copper alloy; Dial: White aluminum with stoppin; black aluminum pointer. Black and red markings

Approvals: UL listed UL-393, FM approved



Model Selection Guide

Figure Number	Dial Size	Pressure Range	Catalog Number	Price Each
111.10SP	4"	300 PSI (Water)	4233761	\$15.06
111.10SP	4"	80 PSI (Retard)	4233779	16.92

P590 ABS Plastic Case Gauges

Specifications

Accuracy: ±3-2-3% span

Materials: ABS plastic weather-resistant case, polycarbonate lens; brass movement; Beryllium copper or phosphor bronze bourdon tube

Call for P590 gauges with center back connections.



Model Selection Guide

Range	Dial Size	Process Connection	Catalog Number	Price Each
P590 ABS Plastic Case Gauge: Lower Male Brass Connection				
0-15 PSI	1.5"	1/8" NPT	146989A	\$28.59
0-30 PSI	1.5"	1/8" NPT	146990A	28.59
0-60 PSI	1.5"	1/8" NPT	146991A	28.59
0-100 PSI	1.5"	1/8" NPT	146992A	28.59
0-160 PSI	1.5"	1/8" NPT	146993A	28.59
0-30 PSI	2"	1/4" NPT	160652A	23.68
0-60 PSI	2"	1/4" NPT	160653A	23.68
0-100 PSI	2"	1/4" NPT	160654A	23.68
0-160 PSI	2"	1/4" NPT	160655A	23.68
0-200 PSI	2"	1/4" NPT	160656A	23.68
0-300 PSI	2"	1/4" NPT	160657A	23.68

Stainless Steel Pressure Gauges

These heavy duty pressure gauges are designed to withstand corrosive atmospheres, industrial gases, and can be used in corrosive process media.

Specifications

Accuracy: ±1% of span

Size: 2", 2.5", and 3.5"

Materials: Case: Drawn stainless steel satin finish, pressure relief in case back; Window and threaded ring: Polycarbonate; Bourdon tube: 316 stainless steel, heli-arc welded



Model Selection Guide

Pressure Range	Dial Size	Catalog Number	Price Each
P1535 Gauge: 1/4" NPT Bottom Stem Mount, 316 Stainless Steel			
0- 15 PSI	2.5"	110792A	\$161.14
0- 30 PSI	2.5"	110793A	161.14
0- 60 PSI	2.5"	110794A	161.14
0- 100 PSI	2.5"	110690A	161.14
0- 160 PSI	2.5"	110795A	161.14
0- 200 PSI	2.5"	110796A	161.14
0- 300 PSI	2.5"	110797A	161.14
0- 400 PSI	2.5"	110798A	161.14
0- 600 PSI	2.5"	110799A	161.14
0- 1000 PSI	2.5"	110800A	161.14

611.10 Low Pressure Gauges

These extremely sensitive WIKA gauges are designed to measure gaseous media as low as 10" H₂O.



Specifications

Accuracy: ±1.5% span

Materials: Case: Black painted steel; Window: Acrylic; Movement: Brass with highly polished bearing surfaces; Dial: Aluminum, white face, black pointer; Wetted parts: Copper alloy



Model Selection Guide

Range	Dial Size	Catalog Number	Price Each
611.10 Single Scale, 1/4" NPT Bottom Stem Mount			
0-3 PSI	2.5"	9851925	\$43.15
0-5 PSI	2.5"	9851933	43.15
0-10 PSI	2.5"	4204212	43.15
611.10 Dual Scale ("H₂O/mmH₂O), 1/4" NPT Bottom Stem Mount			
0-30" Vac / 0-760mm Vac H ₂ O	2.5"	9852344	43.15
0-60" Vac / 0-1500mm Vac H ₂ O	2.5"	9748321	43.15
0-100" Vac / 0-2500mm Vac H ₂ O	2.5"	9747473	43.15
0-15" / 0-380mm H ₂ O	2.5"	9851682	43.15
0-30" / 0-760mm H ₂ O	2.5"	9851690	43.15
0-60" / 0-1500mm H ₂ O	2.5"	9851704	43.15
0-100" / 0-2500mm H ₂ O	2.5"	9851810	43.15
0-200" / 0-5000mm H ₂ O	2.5"	9851828	43.15

Portable 3" Test Gauges

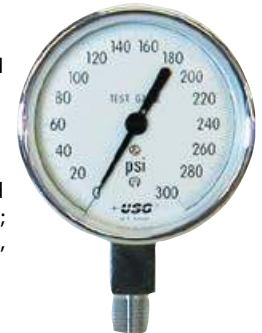
Specifications

Accuracy: ±0.5% span or ±1% span (0-1500 PSI to 0-5000 PSI).

Arc of Calibration: 300° on 1409

Connection: 1/4" NPTM lower mount, brass

Materials: Case/Threaded ring: Chrome-plated high-impact ABS case; Window: Beveled glass; Pointer: Knife-edged, black, adjustable; Dial: Steel, white background, black markings.



Model Selection Guide

Range	Figure Interval	Smallest Interval	Catalog Number	Price Each
P1409 3" Test Gauge: 1/4" NPT Bottom Stem Mount				
0-30 PSI	2 PSI	0.1 PSI	161947	\$214.15
0-60 PSI	5 PSI	0.2 PSI	161948	214.15
0-100 PSI	10 PSI	0.5 PSI	161949	214.15
0-160 PSI	10 PSI	1 PSI	161950	214.15
0-200 PSI	20 PSI	1 PSI	161951	214.15
0-300 PSI	20 PSI	1 PSI	161952	214.15
0-600 PSI	50 PSI	2 PSI	161953	214.15
0-1000 PSI	100 PSI	5 PSI	161954	214.15
0-3000 PSI	500 PSI	20 PSI	161957	214.15
P1409 Optional Protective Cover			161959	13.50

Need high accuracy test gauges?
Call for WIKA/Wallace & Tiernan precision test gauges with accuracies to ±0.066%.

Sanitary Pressure Gauges for Food and Pharmaceutical Use



Specifications

- Accuracy:** *Sani-Flow:* ±1.5% full scale; *Pharma-Flow:* ±0.75% full scale
- Overrange Capability:** Sani-Flow only: 25%
- Wetted Surfaces:** *Sani-Flow:* 316L stainless steel; *Pharma-Flow:* 316L stainless steel (electropolished)
- Surface Finish (Wetted Parts):** *Sani-Flow:* R_amax = 25 micro-inches; *Pharma-Flow:* R_amax = 8 micro-inches
- Temperature Limits:** 0° to 250° F standard (models available for high temperature applications)
- Re-Zero Feature:** Standard on pointer

Ordering Instructions

Make one selection from each table section below. Follow the availability column down to be sure the unit is available. A finished model number looks like this: 3S-E-2U-GF-BT-SS

Model Selection Guide

Description	Catalog Number	Availability	Price
3-1/2" Sani-Flow Gauge	3S	↓	\$304.00
3-1/2" Pharma-Flow Gauge	3P	↓	344.00
Range*			
0-30 PSI 2 Bar	B	• • •	0.00
0-60 PSI 4 Bar	C	• • •	0.00
0-100 PSI 7 Bar	D	• • •	0.00
0-160 PSI 11 Bar	E	• • •	0.00
0-200 PSI 14 Bar	F	• • •	0.00
0-300 PSI 21 Bar	G	• • •	0.00
30" Hg to 30 PSI 1-2 Bar	M	• • •	0.00
30" Hg to 100 PSI 1-7 Bar	O	• • •	0.00
Adapter Size			
1 1/2" Tri-Clamp Adapter for Sani-Flow	1.5U	• • •	0.00
1 1/2" Tri-Clamp Adapter for Pharma-Flow	1.5U	• • •	0.00
2" Tri-Clamp Adapter for Sani-Flow	2U	• • •	0.00
2" Tri-Clamp Adapter for Pharma-Flow	2U	• • •	0.00
2 1/2" Tri-Clamp Adapter for Sani-Flow	2.5U	• • •	40.00
2 1/2" Tri-Clamp Adapter for Pharma-Flow	2.5U	• • •	72.00
3" Tri-Clamp Adapter for Sani-Flow	3U	• • •	40.00
3" Tri-Clamp Adapter for Pharma-Flow	3U	• • •	72.00
Liquid Fill	None	NF	• • • 0.00
	Glycerine Fill	GF	• • • 0.00
Mount	Bottom	BT	• • • 0.00
Diaphragm Material	Stainless Steel	SS	• • • 0.00
	Teflon	TF	• • • 0.00

* Standard scales in PSI only. Dual PSI/Bar and other scales also available.

Features

- **316L Stainless Steel Sanitary Fittings and Diaphragm or Electropolished Welded Diaphragm:** Maximum corrosion resistance and the most sanitary construction available
- **304 Stainless Steel Case:** For durability even in the roughest environments
- **Lexan® Lens:** Impervious to cracks and breakage
- **CIP and Waterproof:** Gauges can be safely submersed or cleaned in place. CIP eliminates the possibility of damage from mishandling
- **Unique Pulsation Dampening System:** Insulates the gauge movement from pulsations that shorten the life of an ordinary pressure gauge
- **Glycerine Fill:** Available to protect the gear mechanism against vibration

The Sani-Flow pressure gauge is designed specifically for food processing applications, and the Pharma-Flow pressure gauge is designed for pharmaceutical applications. These gauges are built to withstand harsh environments, to meet the strict requirements of food and pharmaceutical plants, and to function for many years with little or no maintenance.

Looking for a 4" dial welded sanitary gauge?

Call for pricing and availability.



Gauge Accessories

Mini Needle Valves

- Designed for safe, repetitive closure, simple maintenance, and a long trouble-free life
- Ball end stem provides bubble-tight shutoff. Hardened, non-rotating ball ensures perfect alignment closure
- Carbon steel or 316 stainless steel bodies; Models below have Teflon bonnet packing
- See more on pages 346 and 347



Model Selection Guide

Box of 5

Body Material	Connection		Catalog Number	Price Each
	Inlet	Outlet		
Carbon Steel	1/2" NPTM	1/2" NPTF	HN291S-44MF	\$142.20
Carbon Steel	1/2" NPTF	1/2" NPTF	HN291S-4F	142.20

Coil Syphons

Normally used in high-temperature applications to protect the pressure gauge from damaging process fluids. Syphons are added between the gauge and line to cool steam or other hot vapors before they enter the gauge and cause permanent damage.



Model Selection Guide

Material	Loop Style	Pipe Thread	Maximum		Catalog Number	Price Each
			Temp.	Pressure		
Schedule 40 Construction (Temperature dissipates at a rate approximately 100° per 100 foot of 1/2" pipe)						
Carbon Steel	180°	1/4"	400°F	250 PSI	21AS	\$8.84
Carbon Steel	180°	1/2"	400°F	250 PSI	51SS	34.72
Carbon Steel	90°	1/2"			52SS	34.72
316 SS	180°	1/4"	400°F	500 PSI	216S	47.84
316 SS	180°	1/2"			516S	100.00
316 SS	360°	1/2"			546S	120.00
Schedule 80 Construction						
Carbon Steel	180°	1/4"	400°F	500 PSI	21AX	11.28
Carbon Steel	180°	1/4"	400°F		21SX*	22.24
Carbon Steel	180°	1/2"	400°F	500 PSI	51AX	33.20

* Seamless construction.

Armored Capillary



For remote mounting a pressure gauge or transmitter for easy reading. Available in 304 and 316 stainless steel, it's compatible with most process environments.

Specify with Order:

1. Tubing Material
2. Tubing Length **LL**
3. Fitting NPT Thread Size
4. Fitting Configuration **c** (male or female thread)

Model Selection Guide

Tubing Material	Fitting Size	Catalog Number	Std. Assembly Price (5 Ft.)	Adder/ +5 Ft.
Armored Capillary. Replace LL with desired length. Replace c with M or F.				
304 SS	1/4" x 1/4"	CA-304-LL - 1/4 c x 1/4 c	\$86.43	\$25.00
304 SS	1/2" x 1/2"	CA-304-LL - 1/2 c x 1/2 c	100.71	25.00
316 SS	1/4" x 1/4"	CA-316-LL - 1/4 c x 1/4 c	93.57	17.85
316 SS	1/2" x 1/2"	CA-316-LL - 1/2 c x 1/2 c	107.86	17.85

Vari-Damp Pulsation Dampener

- Reduces instrument damage
- Controls pulsation and shock
- Broad adjustable dampening range and positive shutoff
- Stops pointer oscillation, chart painting



The Vari-Damp pulsation dampener has a ball check cutoff to block line surges, shock waves, and fluid hammer and an adjustable, fine-thread choke valve to tune out line pulses.

The combination of the ball check and a tunable choke valve makes the Model 150 ideal for use on low-displacement instruments that require heavy dampening (Bourdon tubes); and with high-displacement instruments such as diaphragm-, piston- and bellows-operated gauges, recorders and controllers, which require moderate to heavy dampening.

The choke valve throttles and dampens out pulsations and cyclic pressure waves, and can be adjusted to dampen out to any level desired to prevent pointer oscillation on gauges, chart painting on recorders, instability in controllers, or damage to instruments.

Model Selection Guide

Working Pressure	Materials		Connections NPT (F)	Catalog Number	Price Each
	Body	Trim			
Model 150 Vari-Damp pulsation dampener. Viton O-Ring and Teflon® seals.					
3000 PSI	Brass	316 SS	1/4"	150-B0-10	\$31.00
5000 PSI	Brass	316 SS	1/2"	150-BH-10	39.00
	316 SS	316 SS	1/4"	150-S0-10	72.00
10000 PSI	316 SS	316 SS	1/2"	150-SH-10	99.00

Gauge Minder Limiting Valve

- Eliminates damage caused by overpressure
- Includes automatic shutoff
- Adjustable damping



The Model 200 Gauge Minder automatically shuts off a pressure instrument when a shock pulse or an overpressure occurs. A needle valve is built in for pulsation dampening and manual shutoff.

The pulsation dampener snubs out instrument oscillations, improves the readability, and extends the life of the instruments. The manual shutoff valve eliminates the need for a gauge cock or block valve at the instruments. Gauge Minder comes with range springs for setting the shutoff pressure point at any pressure from 50 to 5000 PSI. The automatic shutoff valve is non-chattering and positive on closing.

Model Selection Guide

Working Pressure	Materials		Connections NPT (F)	Catalog Number	Price Each
	Body	Trim			
Model 200 Gauge Minder pressure limiting valve with adjustable dampening. Buna-N O-ring and Teflon® Seals. 200-BH-10 has Viton O-ring.					
5,000 PSI	Aluminum	316 SS	1/4"	200-A0-00	\$124.00
	316 SS	316 SS	1/4"	200-S0-00	200.00
10,000 PSI	316 SS	316 SS	1/2"	200-SH-00	225.00
	Brass	316 SS	1/2"	200-BH-10	187.00
These range springs are furnished with each unit.			Spring Color	Shutoff Range	
			Silver	50 to 120 PSI	
			Black	100 to 1,100 PSI	
			Gold	1,000 to 5,000 PSI	

Rotary and Smart Actuator Motors

Instrument Valves

Process Control Accessories

Pressure and Temperature Switches

ASCO Solenoid Valves

Pressure Gauges

Chemical Seals for Pressure Gauges

Where should you install chemical seals?

- Where the process medium would corrode the instrument connection and pressure sensing element. Chemical “attacks” cause costly instrument failures and unscheduled downtime.
- Where the process medium contains suspended solids or is viscous enough to clog the instrument connection and the pressure sensing element. Blocked pressure ports prevent accurate measurement.
- Where the process medium might freeze or solidify in the instrument connection and sensing element due to temperature changes. Solid media can block pressure ports, preventing accurate measurement, or distort the diaphragm of your measuring instrument.
- Where changing process medium requires flushing the system to prevent contamination.
- Where the process application requires sanitary connections. Most measuring instruments cannot meet 3A sanitary standards due to crevices inherent to their design. Or they can’t withstand the temperature requirements of steam cleaning. A diaphragm seal provides a sanitary connection and allows easy cleaning between batches.
- Where your measuring instrument has to be remote mounted to protect it from high ambient temperatures, vibration, harsh environments, or accessibility problems. A diaphragm seal ensures reliable and accurate pressure measurements.



What do you need to know to pick the **RIGHT** chemical seal?

A. Mounting Type. Your options include threaded (NPT), flange attached, pancake mounting between two flanges, weld attached and sanitary clamp attached. See the next page for samples of the seals we offer.

B. Material Compatibility. The proper selection of wetted parts ensures the application compatibility of your diaphragm seal. Consider all chemicals the seal will be exposed to during service. You'll pick the seal material that will best stand up to corrosion, pitting, stress cracking, embrittlement, and hydrogen permeation.

If you have an extremely caustic media, look at an all-Teflon insert, flange attached seal or a pancake-style ring seal. By using elastomers, you can drastically reduce seal cost and maintenance.

C. Process Working Pressures. This is important for extremely low or high pressures. Between 100 and 1000 PSI, almost any seal will suit. It is best to use elastomer seals for low pressure so the diaphragm will flex enough to transmit the pressure to your instrument. For high pressures, it is best to use a metal diaphragm. In most applications, they will last longer.

D. Attachment to Compatible Instruments. Each seal has a different volumetric displacement or sensitivity. If the displacement of the seal is less than that of the sensing instrument, they will not work. Seal displacement **MUST** be greater than that of the instrument.

E. Process Temperatures. In order to transmit the process pressure through the seal to the sensing instrument, you must fill the sensor with a fill fluid. All fill fluids have different stable operating temperature ranges. If you exceed the fluids' temperature limits, they can boil and destroy the seal, the instrument, or both.

Specifications of Fill Fluids

Application	Fill Fluid	Suitable Temperature Range	
		Pressures < 15 PSI	Pressures > 15 PSI
General Service	Silicone Oil DC 200/50	-4° to 250° F	-4° to 392° F
	Silicone Oil DC 200/10	-40° to 250° F	-40° to 400° F
Low Temp.	Silicone Oil (4 cSt)	-130° to 176° F	-130° to 356° F
High Temp./ High Vacuum	High-Temperature Oil (All threads welded during assembly)	4° to 392° F	-4° to 750° F (14° to 750° F with transmitters)
Oxygen/ Chlorine Service	Halocarbon 6.3	-40° to 176° F	-40° to 347° F
	Fluorolube FS-5	—	-40° to 392° F
Food and Beverage	Glycerine*	—	60° to 462° F
	Glycerine/Water*	—	14° to 248° F
	Mineral Oil	-4° to 338° F	-4° to 482° F
	Food-Grade Silicone Oil	—	0° to 572° F
	Neobee M20	-10° to 200° F	-10° to 400° F

* (Not suited for vacuum/compound ranges)

Call for pricing and delivery on all seal assemblies and fill fluids.

Welded Metal Seals

- Welded diaphragm and body
- Threaded and flanged process connections
- Materials available for use in both general service and corrosive applications



Specifications

Pressure Ratings: Threaded: 15 PSI to 3675 PSI; Flanged: 150#, 300#, 600#

Operating Temperature: Up to 752°F, dependent on materials

Gasket: Viton (good to 400°F); Teflon (good to 500°F)

Clamp, Support Ring, Nuts, and Bolts: Carbon steel, zinc-plated (good to 400°F), 300 series SS (good to 500°F)

Need welded diaphragms for large volumes? Call us!

Saddle Flange Welded Diaphragm

Specifications

Operating Temperature: 0° to 482° F

Pressure Rating: 1500 PSI, depending on pipe size; *Suitable pressure ranges:* 15 PSI to 1500 PSI

Construction: Upper housing and saddle flange: 316 stainless steel or nickel-plated carbon steel; *Clamping materials (bolts and washers):* 316 stainless steel; *Diaphragm:* 316 stainless steel; *Gasket:* Viton (max. temp. 400°F) or Teflon (max. temp. 500°F)



Flanged-Type Flush Diaphragm

Specifications

Pressure Rating: 150#, 300#, 600#

Suitable Pressure Ranges: 10" H₂O to maximum flange rating, depending on diaphragm size and process conditions

Operating Temperature: -130° to 752°F

Minimum Pressure Span:	Nominal Size	Gauge Pressure	Differential Pressure
	1"	400 PSI	200" H ₂ O
	2"	350 PSI	160" H ₂ O
	3"	50 PSI	10" H ₂ O



Miniature Diaphragm Seal

- For 2.5", 4" and 4.5" dial pressure gauges
- Welded 316 stainless steel, Monel, or Hastelloy C-276 construction
- Good from 100 PSI to 2500 PSI



Low Pressure Welded Diaphragms

Specifications

Range: Threaded: 10" H₂O to 1500 PSI; Flanged: 10" H₂O to max. flange rating

Construction: Housing/diaphragm: 316 SS; Gasket: Viton (max. temperature 400°F); Bolts: 300 series stainless steel (max. temperature 500°F)

Operating Temperature: -40° to 752° F



Pancake Diaphragm

Specifications

Pressure Rating: 150# to 2500#

Operating Temperature: -40° to 752°F

Minimum Span, "H₂O: Nominal size: 3"; Gauge pressure: 50; Differential pressure: 10; *Suitable Ranges:* 10" H₂O to max. flange rating, depending on diaphragm size and process conditions



Flanged-Type Extended Diaphragm

Specifications

Suitable Pressure Ranges: 10" H₂O to flange rating (max 1500 PSI), depending on diaphragm size and process conditions

Pressure Rating: 150#, 300#

Operating Temperature: -130° to 752°F

Minimum Pressure Span:	Nominal Size	Gauge Pressure	Differential Pressure
	3"	200 PSI	50" H ₂ O
	4"	50 PSI	10" H ₂ O



Inline Chemical Seal

Mounts directly into the process line to reduce damage caused by media that clog or foul Bourdon tubes. Helps eliminate all corners or obstructions to media flow. The 360° polyurethane liner provides repeatable, accurate pressure readings. Other liner materials available.

Specifications

Suitable Ranges: 50 PSI to CI 150# per ASME B16.5

Construction: Body: Black-painted carbon steel; Flange: Carbon steel; Bolting Hardware: Carbon steel; Diaphragm: PU/80 shore polyurethane



Sanitary Application Seals

- Welded diaphragm and body
- Fits Tri-Clamp® systems; Call for others
- Special materials or electropolishing available on request



Flushing Ring

WIKa's flushing ring is used with a flanged pancake and INLINE SEAL™ chemical seals. It contains two lateral NPT ports that flush out the collected process medium adjacent to the diaphragm. It is excellent for use when there is potential of deposits from the process medium blocking access to the diaphragm.



Rotary and Smart Actuator Motors

Instrument Valves

Process Control Accessories

Pressure and Temperature Switches

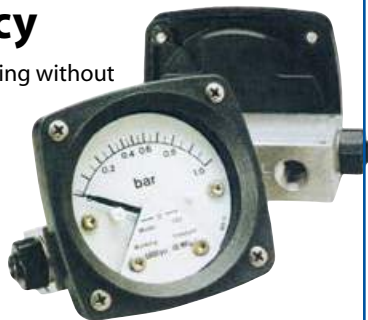
ASCO Solenoid Valves

Pressure Gauges

Differential Pressure Gauges

Model 120 Filter-Minder ±2% Accuracy

- Weatherproof for outdoor mounting without damage to dial or working parts.
- Solid front engineering plastic case, shatter-resistant lens
- Aluminum or 316 stainless steel pressure housing



Specifications

Dial Size: 2.5"
Accuracy: ±2% full scale, ascending per B40.100 Grade B
Pressure: Working: 6,000 PSIG; Proof: 12,000 PSIG
Temperature: -40° to 200°F
Pressure Connections: 1/4" NPTF back connections
Materials: Case and lens: Engineering plastic; Body: Aluminum or 316 stainless steel; Seals: Buna-N O-rings
Leakage Across Piston: Will not exceed 15 SCFM air at 100 PSID, ambient.

Model Selection Guide

Material	Catalog Number and Range	Price
Aluminum	120-AA-00-00 25 PSID	\$139.00
Aluminum	120-AA-00-00 50 PSID	139.00
Aluminum	120-AA-00-00 75 PSID	139.00
Aluminum	120-AA-00-00 100 PSID	139.00
316 Stainless Steel	120-SA-00-00 25 PSID	265.00
316 Stainless Steel	120-SA-00-00 50 PSID	265.00
316 Stainless Steel	120-SA-00-00 75 PSID	265.00
316 Stainless Steel	120-SA-00-00 100 PSID	265.00

Options

Pipe Mounting Kit — Back Connection Only	35.00
Maximum Indicator Follower Pointer	25.00
Liquid Fill (Dial Chamber Only)	30.00
Alarming Reed Switches	

All Mid-West DP indicators below are available to our OEM customers in quantities of 100 or more. Please call for pricing.

DP Indicators for OEM Use

Model 126/127: Low cost piston-type differential pressure indicator. For reliably measuring pressure drop across filters, strainers, and separators.



Range: 126: 0-5 PSID through 0-20 PSID; 127: 0-25 PSID through 0-100 PSID
Accuracy: ±5% full scale
Materials: Aluminum body, 316SS internals, Buna-N elastomer, 1/8" NPTF bottom process connection

Model 146: Diaphragm-type differential pressure indicator. Features total separation between high and low sides.



Range: 0-50" H₂O to 0-30 PSID
Accuracy: ±5% full scale
Materials: Aluminum, brass, or 316 SS body; 316SS internals; Buna-N elastomer; 1/8" NPTF bottom process connection

Model 444: The ideal differential pressure indicator when readability, small size, and low price are your main concerns. Features a directional flow arrow and green-to-red sliding indication



Range: 0-5 PSID to 0-25 PSID
Accuracy: ±5% full scale
Materials: Glass-filled Nylon body; GFN and stainless steel internals; Buna-N and Viton elastomers; Direct-mounting slotted hex bolt 3/8"-24 process connection, UNF 1.75" spacing

Model 522: This differential pressure indicator has a rubber rolling diaphragm and metal body. Suitable for use in hose down applications. The rolling diaphragm sensing element isolates the high and low sides of the indicator.



Range: 0-5 PSID to 0-50 PSID
Accuracy: ±5% full scale
Materials: Aluminum or 316/316L SS body; 316SS, ceramic, and acetal moving parts; Buna-N, Viton, or EPDM elastomers; 1/4" NPTF process connection

Model 555: This DP gauge offers dual color-coded dials for easier installation regardless of flow direction. The rolling diaphragm sensing element isolates the high and low side of the indicator, assuring filter efficiency.

Range: 0-5 PSID to 0-50 PSID
Accuracy: ±5% full scale
Materials: Glass-filled Nylon (GFN) body; Stainless steel, ceramic, and GFN internals; Buna-N elastomers; 3/8"-24" molded bolt process connections, 1.75" spacings



Model 122 Filter Minder ± 5% Accuracy

Specifications

Dial Size: 2.5"
Accuracy: ±5% full scale
Pressure: Working: 5000 PSIG; Proof: 10,000 PSIG
Temperature: -40° to 200°F
Pressure Connections: 1/4" NPTF back connections
Materials: Case and Lens: Engineering plastic; Body: Aluminum or 316 stainless steel; Seals: Buna-N O-rings
Leakage Across Piston: Will not exceed 15 SCFM air at 100 PSID, ambient



Model Selection Guide

Material	Catalog Number and Range	Price
Aluminum	122-AA-00-00 25 PSID	\$122.50
Aluminum	122-AA-00-00 50 PSID	122.50
Aluminum	122-AA-00-00 75 PSID	122.50
Aluminum	122-AA-00-00 100 PSID	122.50

**Mid-West[®]
Instrument**

Model 130 Delta Gauge

Diaphragm-type DP gauge for low differential pressures

- $\pm 2\%$ full scale accuracy, $\pm 5\%$ full scale for 5" to 9.9" H₂O
- 4.5" dial, aluminum body, 316 stainless steel internals, Buna-N seal and diaphragm
- Available ranges from 0–5" H₂O to 0–400" H₂O differential; Static working pressures to 300 PSIG
- Flexible elastomer diaphragm provides total separation of high and low pressure signals
- Hermetically sealed reed switches, max. indicator follower pointer, mounting kits, and alternative body material options



Prices start at \$435.00

Model 140 Harsh Service Gauge

- Ideal for use on dissimilar fluids, wet gas, or fluids with high concentration of suspended solids
- $\pm 2\%$ full scale accuracy
- Ranges from 50" H₂O to 100 PSID (140), 20" H₂O to 25 PSID (142); Working pressures to 3000 PSIG.
- Sensor magnetically coupled to pointer and switches
- 2.5" or 4" dial, aluminum or 316 stainless steel body, 316 stainless steel internals, Buna-N diaphragm and seal
- Overrange protection to rated working pressures
- Weatherproof plastic dial chamber with shatter-resistant lens
- Optional hermetically sealed reed switches, mounting kits



Prices start at \$225.00

Model 220 Hazardous Location Piston-Type DP Gauge

- $\pm 3-2-3\%$ accuracy
- 4.5" dial, aluminum or 316 stainless steel body, 316SS internals, Buna-N diaphragm and seal
- Available ranges from 0-5 PSID to 0-100 PSID; Static working pressures to 4000 PSIG
- CSA, UL, and ATEX approvals



Prices start at \$535.00

Models 105-106

6" Dial, 0-10" to 0-400" WCD Range

- $\pm 1\%$ full scale accuracy ($\pm 0.5\%$ optional)
- Available ranges from 10" WCD to 400" WCD; 1500 PSIG working pressure
- 6" dial, aluminum (105) body with copper alloy sensing element, or 316 stainless steel (106) body and internals, Buna-N seal



Prices start at \$905.00

Model 109

6" Dial, 0-15 to 0-6000 PSID Range

- $\pm 1\%$ full scale accuracy ($\pm 0.5\%$ optional)
- Available ranges from 15 PSID to 6000 PSID
- 6" dial with high-impact plastic housing, aluminum or 316 stainless steel body, brass or 316 stainless steel bourdon tube, Buna-N seals, brass or stainless steel overrange valves
- 10 cc volume Bourdon tube, 140 cc capsule, displacement 0.02 cc full scale



Prices start at \$840.00

Model 240 Hazardous Location Diaphragm Isolated DP Gauge

- $\pm 3-2-3\%$ accuracy
- Available ranges from 20" WCD to 1000 PSID; 1500 PSIG working pressure
- 4.5" dial, aluminum or 316/316L stainless steel body, 316SS internals, ceramic magnets, Buna-N diaphragm and seal
- CSA, UL, and ATEX approvals



Prices start at \$645.00

Call 800-9LES MAN to order. (That's 800-953-7626)

Rotary and Smart Actuator Motors

Instrument Valves

Process Control Accessories

Pressure and Temperature Switches

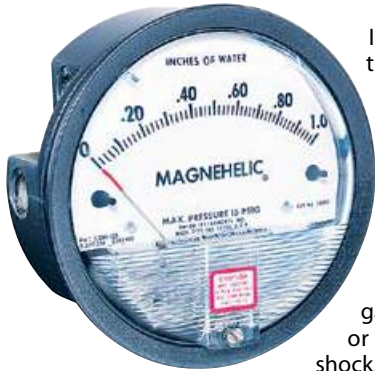
ASCO Solenoid Valves

Pressure Gauges

Ultra Low Differential Pressure Gauge



For Sensing Low Air or Gas Positive, Negative, or Differential Pressure



Ideal for both portable and stationary applications — measuring fan, blower, and fluid system pressures, filter resistance, air velocity, furnace draft, pressure drop across orifice plates, liquid levels with bubble.

Using simple, frictionless Magnehelic® movement, it quickly indicates low air or noncorrosive gas pressures — positive, negative, or differential. The design resists shock, vibration, and overpressures. No manometer fluid to evaporate, freeze, or cause toxic or leveling problems.

A single case size is used for most Magnehelic gauges. Can be flush or surface mounted with standard hardware. With an optional pipe-mounting kit, they may be conveniently installed on horizontal or vertical 1-1/4" to 2" pipe. Although calibrated for vertical position, many ranges above 1" can be used at any angle by simply re-zeroing. For maximum accuracy, they must be calibrated in the same position in which they are used. A 4-1/2" hole is required for flush panel mounting. Includes complete mounting and connection fittings and instructions.

Specifications

- Ambient Temperature:** 20° to 140°F. Low temperature models available.
- Rated Total Pressure:** -20" Hg. to 15 PSIG. For high cycle rate within total pressure rating, next higher range is recommended.
- Connections:** 1/8" NPT high and low pressure taps, duplicated — one pair side and one pair on back.
- Housing:** Diecast aluminum, Iridite-dipped to withstand 168 hour salt spray test. Exterior finish is baked dark gray hammerloid.
- Accuracy:** ±2% full scale (3% on -0 and 4% on -00 models, vertical scale position only), throughout range at 70°F.
- Accessories:** Two 1/8" NPT plugs for duplicate pressure taps, two 1/8" pipe thread to rubber tubing adaptors, and three flush mounting adaptors with screws. (Mounting ring and snap ring retainer substituted for 3 adaptors in MP and HP accessories.)

Model Selection Guide

Range ("WC)	Catalog Number	Price Each	Range ("WC)	Catalog Number	Price Each
0-0.25	2000-00*	\$73.00	0.25-0-0.25	2300-0*	\$74.00
0-0.50	2000-0*	63.50	0.5-0-0.5	2301	74.00
0-1.0	2001	63.50	1-0-1	2302	74.00
0-2.0	2002	63.50	2-0-2	2304	74.00
0-5.0	2005	63.50	5-0-5	2310	74.00
0-6.0	2006	63.50			
0-8.0	2008	63.50			
0-10	2010	63.50	10-0-10	2320	74.00
Options	Adjustable Signal Flag		-ASF		10.00
	High Pressures (to 80PSIG)		-HP		119.00
	Low Temperatures (to -20°F)		-LT		10.00

* Accuracies (vertical scale position only): -00 Model: 4%. -0 Model: 3% .

Combination Indicating Differential Pressure Gauge, High/Low Alarm



Photohelic® switch/gauges can control pressures in air conditioning systems, clean rooms, fluidic and pneumatic control systems, materials handling equipment and control pressure in air structures; and monitor respiratory and blood pressures.

Photohelics function like precise pressure switches combined with time-proven Magnehelic®-design pressure gauges.

Gauge reading is unaffected by switch operation. Easy-to-adjust setpoints with knob controls. Applied pressure and switch setpoints are fully visible. Deadband is one pointer width — less than 1% of full scale. DPDT relays can be easily interlocked to provide variable deadband control. Two photo-actuated circuits and two DPDT relays permit both high and low alarms or limit controls.

Photohelic switch/gauges can be wired for high-latching, low-latching, or combination high-low latching circuits. The equipment will hold in these respective positions once activated and until manually reset. Particularly useful for alarm and signal applications where you're controlling with another Photohelic switch/gauge or other means. Complete wiring and operational instructions are included. Relay transformer features a translucent Styrene Acrylonitrile housing to protect electronic components. Solid state and integrated circuit electronics are on glass-epoxy printed circuit boards and self-extinguishing terminal boards.

Specifications

- Ambient Temperature:** 20° to 120°F. Low temperature models available.
- Rated Pressure:** 20" Hg to 25PSIG total on either side of diaphragm.
- Accuracy:** ±2% full scale at 70°F. (3% on -0 and 4% on -00 models).
- Gauge Connections:** 1/8" NPTF.
- Electrical Rating (of Relays):** 10A @ 28 VDC, 10A @ 120, 240 VAC.
- Power Required:** 120 VAC, 50/60 Hz; 240 VAC and 24 VAC power optional
- Setpoint Adjustment:** Adjustable knobs on front face.
- Finish:** Case exterior is baked, dark gray hammerloid.

Model Selection Guide

Range ("WC)	Catalog Number	Price Each	Range ("WC)	Catalog Number	Price Each
0-0.25	A3000-00*	\$311.00	0-8.0	A3008	\$295.00
0-0.50	A3000-0*	295.00	0-10	A3010	295.00
0-1.0	A3001	295.00	0-20	A3020	295.00
0-2.0	A3002	295.00	0-25	A3025	295.00
0-5.0	A3005	295.00	0-50	A3050	295.00
0-6.0	A3006	295.00	0-80	A3080	295.00
Options	Remote Mounted Relay		-RMR		59.00
	Low Temperatures (to -20°F)		-LT		10.00

* Accuracies (vertical scale position only): -00 Model: 4%. -0 Model: 3% .

Rotary and Smart Actuator Motors

Instrument Valves

Process Control Accessories

Pressure and Temperature Switches

ASCO Solenoid Valves

Pressure Gauges